

## Product datasheet for **CS703798**

### Tissue FFPE Sections, Colon

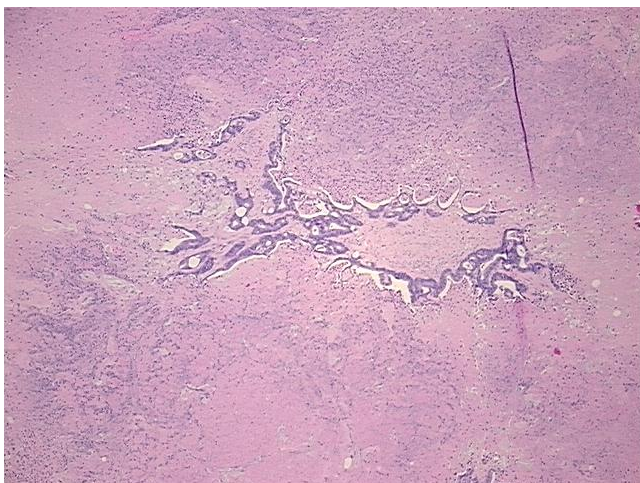
#### Product data:

|   |                                     |
|---|-------------------------------------|
| Product Type:                                     | FFPE Sections                       |
| Disease State:                                    | Cancer                              |
| Diagnosis Category:                               | Colorectal Cancer                   |
| Tissue:   | Colon                               |
| Frozen Sample ID:                                 | PA15477050                          |
| Case ID:  | CI0000006940                        |
| Tissue of Origin:                                 | Colon                               |
| Site of Finding:                                  | Liver                               |
| Appearance:                                       | T                                   |
| Sample Diagnosis (from Pathology Verification):   | Adenocarcinoma of colon, metastatic |
| Normal:   | 0%                                  |
| Lesional:   | 0%                                  |
| Tumor:  | 10%                                 |
| Tumor Hypo/Acellular Stroma:                      | 0%                                  |
| Tumor Hypercellular Stroma:                       | 0%                                  |
| Necrosis:   | 90%                                 |
| CASE Diagnosis (from medical center path report): | Adenocarcinoma of colon, metastatic |
| Age:  | 51                                  |
| Gender:   | Female                              |
| Race:   | White or Caucasian                  |
| Tumor Grade:                                      | Not Reported                        |

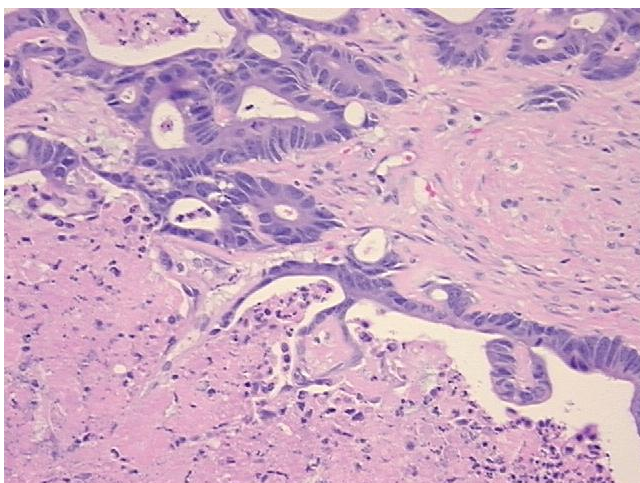


[View online »](#)

|                              |   |
|------------------------------|---|
| Minimum Stage Grouping:      | IV  |
| T (Extent of Primary Tumor): | TX  |
| N (Lymph node metastasis):   | NX  |
| M (Distant metastasis):      | M1  |
| Storage:                     | Store FFPE tissue sections at +4°C.                                   |
| Stability:                   | All FFPE tissue sections are stable for 1 year from date of purchase. |

**Product images:**

4x Image



20x Image