

Product datasheet for **CS703658**

Tissue FFPE Sections, Lung

Product data:

Product Type:	FFPE Sections
Disease State:	Other Disease
Diagnosis Category:	Hyperplasia
Tissue:	Lung
Frozen Sample ID:	PA00004DF1
Case ID:	CI0000006866
Tissue of Origin:	Lung
Site of Finding:	Lung
Appearance:	L
Sample Diagnosis (from Pathology Verification):	Lymphoid hyperplasia of lung
Normal:	90%
Lesional:	10%
Tumor:	0%
Tumor Hypo/Acellular Stroma:	0%
Tumor Hypercellular Stroma:	0%
Necrosis:	0%
Pathology Verification notes from H&E review:	Inflammation: Mild Lymphoid infiltrate; Non Tumor Structures: 60% Alveoli, 15% Bronchioles, 25% Fibrovascular septa
CASE Diagnosis (from medical center path report):	Lymphoid hyperplasia of lung
Age:	68
Gender:	Female
Race:	White or Caucasian



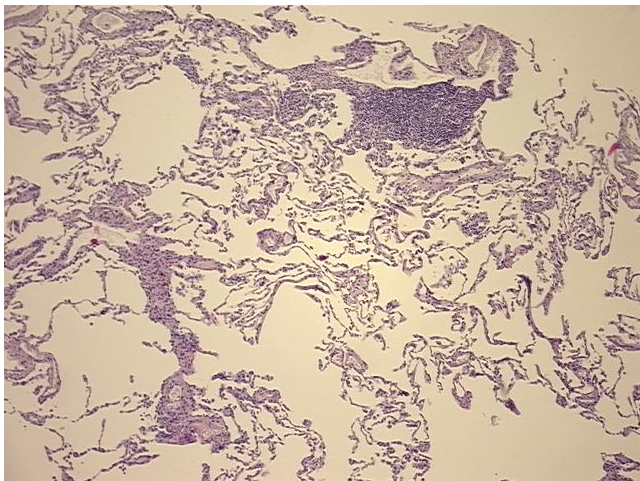
[View online »](#)

Diagnostic Test Results: CD3 ~ Leu4 ~ UCHT1 ! by IHC,Positive; Kappa light chain ! by FC,Positive, polyclonal; Lambda light chain ! by FC,Positive, polyclonal; CD5 ~ Leu1 ! by IHC,Negative; CD43 ~ Leu22 ! by IHC,Negative; CD23 ~ FceRII ! by IHC,Positive; CD20 ~ B1 ~

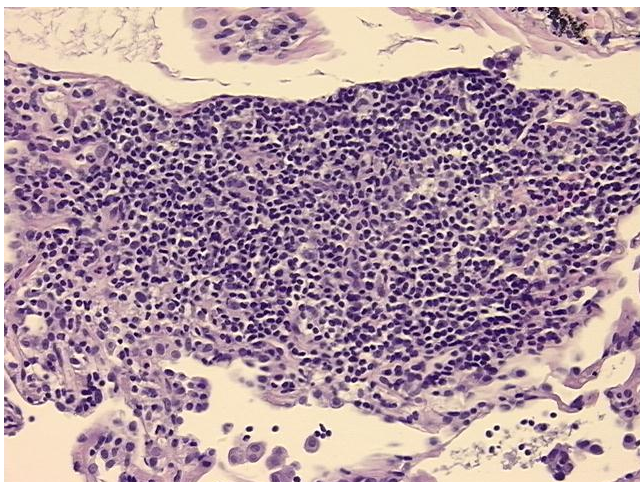
Storage: Store FFPE tissue sections at +4°C.

Stability: All FFPE tissue sections are stable for 1 year from date of purchase.

Product images:



4x Image



20x Image