

Product datasheet for **CS703447**

Tissue FFPE Sections, Skin

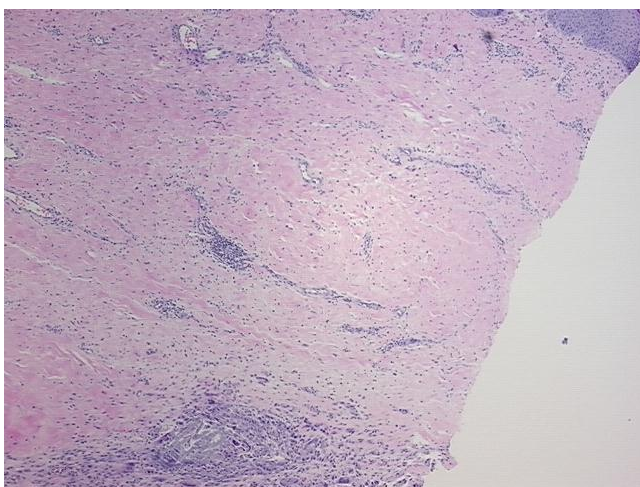
Product data:

Product Type:	FFPE Sections
Disease State:	Other Disease
Diagnosis Category:	Foreign Body Reaction
Tissue:	Skin
Frozen Sample ID:	PA0000509E
Case ID:	CI0000006762
Tissue of Origin:	Skin
Site of Finding:	Skin
Appearance:	L
Sample Diagnosis (from Pathology Verification):	Foreign body reaction
Normal:	85%
Lesional:	15%
Tumor:	0%
Tumor Hypo/Acellular Stroma:	0%
Tumor Hypercellular Stroma:	0%
Necrosis:	0%
Pathology Verification notes from H&E review:	10% epidemis, 90% dermis, 0% subcutaneous tissue
CASE Diagnosis (from medical center path report):	Carcinoma of skin, basal cell
Age:	55
Gender:	Male
Race:	Not reported

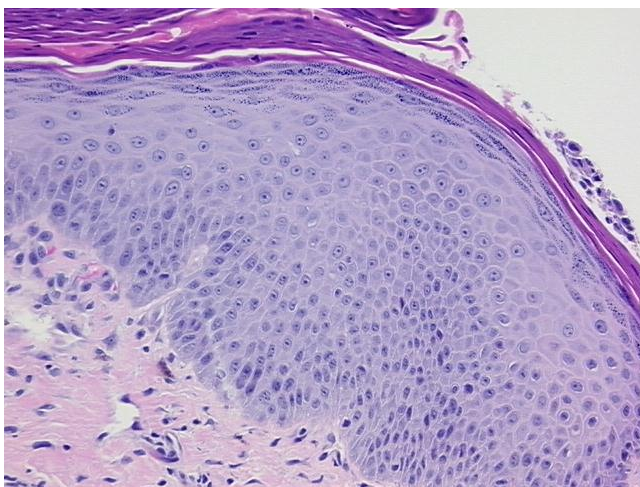


[View online »](#)

Tumor Grade:	Not Reported
Minimum Stage Grouping:	Not Reported
T (Extent of Primary Tumor):	TX
N (Lymph node metastasis):	NX
M (Distant metastasis):	MX
Storage:	Store FFPE tissue sections at +4°C.
Stability:	All FFPE tissue sections are stable for 1 year from date of purchase.

Product images:

4x Image



20x Image