

Product datasheet for **CS703362**

Tissue FFPE Sections, Brain

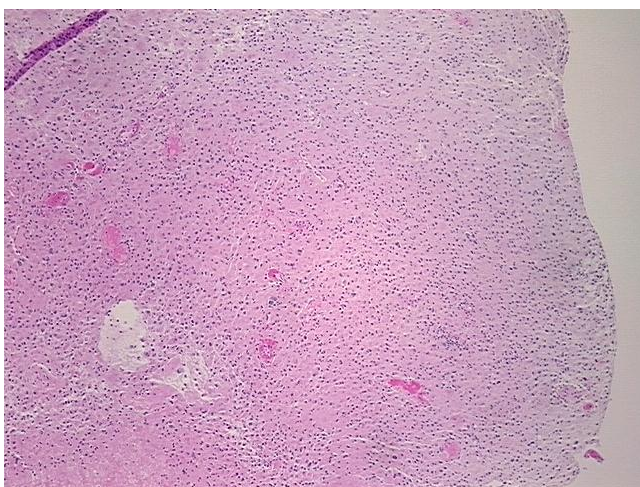
Product data:

Product Type:	FFPE Sections
Disease State:	Cancer
Diagnosis Category:	Brain Cancer
Tissue:	Brain
Frozen Sample ID:	PA00005045
Case ID:	CI0000006721
Tissue of Origin:	Brain
Site of Finding:	Brain
Appearance:	T
Sample Diagnosis (from Pathology Verification):	Astrocytoma, anaplastic
Normal:	0%
Lesional:	20%
Tumor:	10%
Tumor Hypo/Acellular Stroma:	0%
Tumor Hypercellular Stroma:	10%
Necrosis:	60%
Pathology Verification notes from H&E review:	lesion: 100% gliosis
CASE Diagnosis (from medical center path report):	Astrocytoma, anaplastic
Age:	34
Gender:	Female
Race:	Not reported

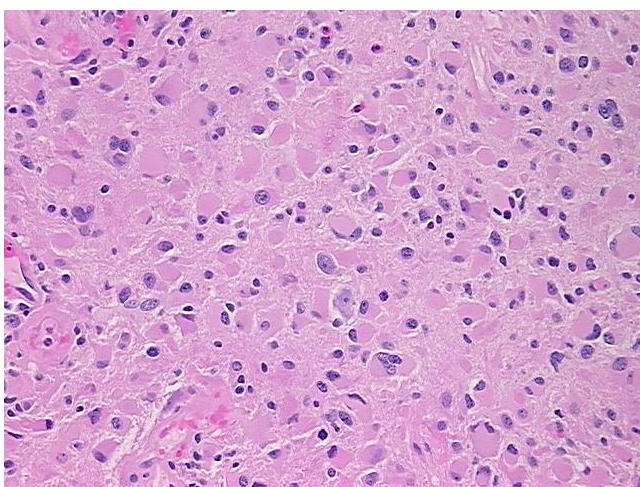


[View online »](#)

Tumor Grade:	WHO Grade III
Minimum Stage Grouping:	Not Reported
T (Extent of Primary Tumor):	Not Reported
N (Lymph node metastasis):	Not Reported
M (Distant metastasis):	Not Reported
Storage:	Store FFPE tissue sections at +4°C.
Stability:	All FFPE tissue sections are stable for 1 year from date of purchase.

Product images:

4x Image



20x Image