

## Product datasheet for **CS703321**

### Tissue FFPE Sections, Ovary

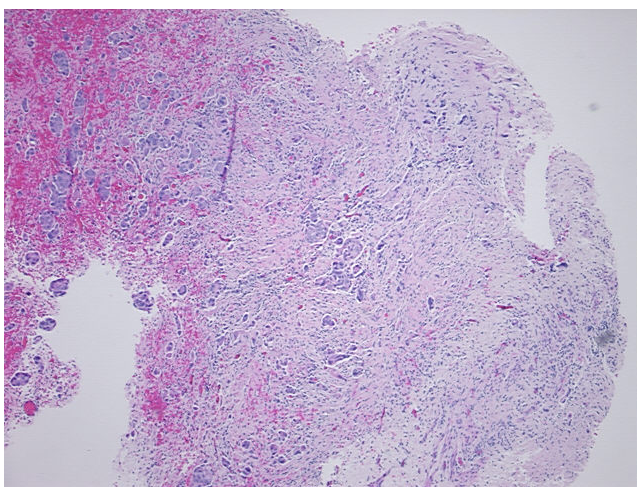
#### Product data:

|                                                   |                                               |
|---------------------------------------------------|-----------------------------------------------|
| Product Type:                                     | FFPE Sections                                 |
| Disease State:                                    | Cancer                                        |
| Diagnosis Category:                               | Ovarian Cancer                                |
| Tissue:                                           | Ovary                                         |
| Frozen Sample ID:                                 | PA00004820                                    |
| Case ID:                                          | CI0000006703                                  |
| Tissue of Origin:                                 | Ovary                                         |
| Site of Finding:                                  | Ovary                                         |
| Appearance:                                       | T                                             |
| Sample Diagnosis (from Pathology Verification):   | Adenocarcinoma of ovary, papillary serous     |
| Normal:                                           | 45%                                           |
| Lesional:                                         | 0%                                            |
| Tumor:                                            | 15%                                           |
| Tumor Hypo/Acellular Stroma:                      | 0%                                            |
| Tumor Hypercellular Stroma:                       | 40%                                           |
| Necrosis:                                         | 0%                                            |
| Pathology Verification notes from H&E review:     | normal consists of ovarian stroma and vessels |
| CASE Diagnosis (from medical center path report): | Adenocarcinoma of ovary, papillary serous     |
| Age:                                              | 78                                            |
| Gender:                                           | Female                                        |
| Race:                                             | White or Caucasian                            |

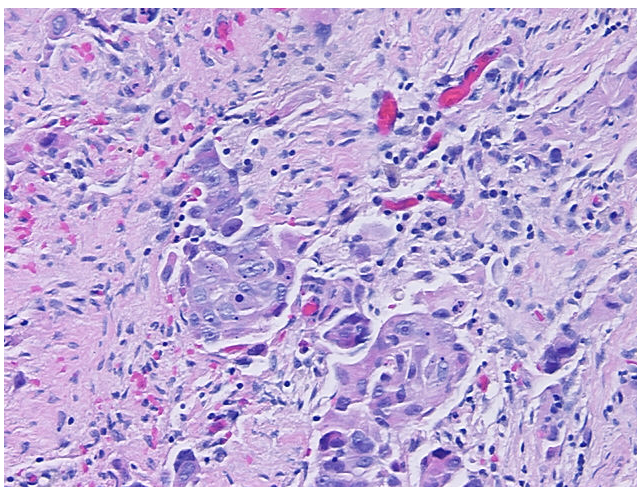


[View online »](#)

|                              |                                                                       |
|------------------------------|-----------------------------------------------------------------------|
| Tumor Grade:                 | FIGO G3: Poorly differentiated                                        |
| Minimum Stage Grouping:      | IIIB                                                                  |
| T (Extent of Primary Tumor): | T3b                                                                   |
| N (Lymph node metastasis):   | NX                                                                    |
| M (Distant metastasis):      | MX                                                                    |
| Storage:                     | Store FFPE tissue sections at +4°C.                                   |
| Stability:                   | All FFPE tissue sections are stable for 1 year from date of purchase. |

**Product images:**

4x Image



20x Image