

Product datasheet for **CS703179**

Tissue FFPE Sections, Pancreas

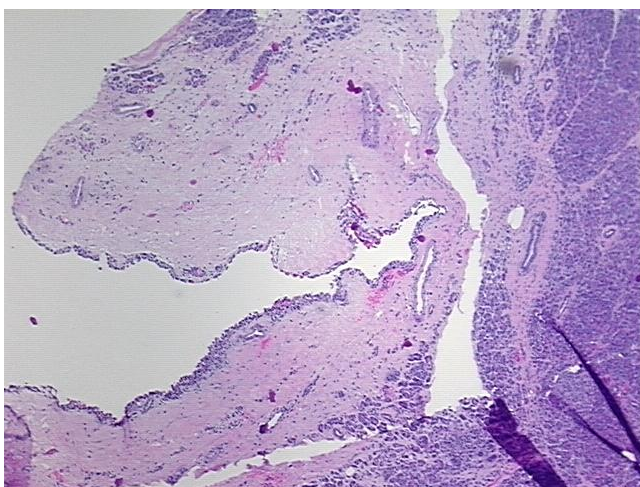
Product data:

Product Type:	FFPE Sections
Disease State:	Other Disease
Diagnosis Category:	Benign Tumors
Tissue:	Pancreas
Frozen Sample ID:	PA00004809
Case ID:	CI0000006637
Tissue of Origin:	Pancreas
Site of Finding:	Pancreas
Appearance:	T
Sample Diagnosis (from Pathology Verification):	Cystadenoma of pancreas, serous
Normal:	55%
Lesional:	0%
Tumor:	45%
Tumor Hypo/Acellular Stroma:	0%
Tumor Hypercellular Stroma:	0%
Necrosis:	0%
Pathology Verification notes from H&E review:	normal component contains 97% exocrine epithelium and 3% endocrine component
CASE Diagnosis (from medical center path report):	Cystadenoma of pancreas, serous
Age:	37
Gender:	Female
Race:	White or Caucasian

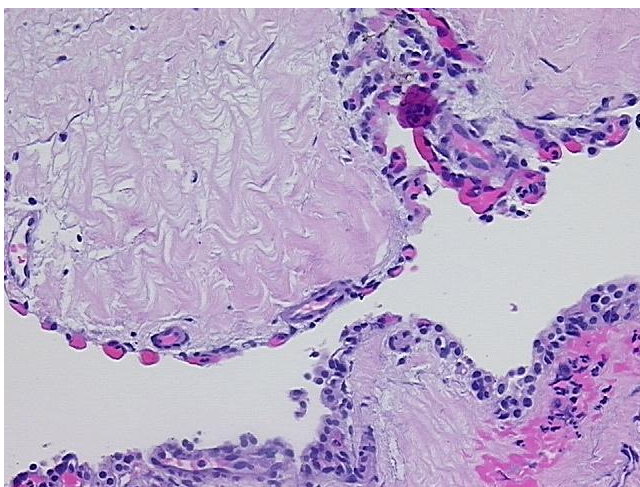


[View online »](#)

Tumor Grade:	Not Reported
Minimum Stage Grouping:	Not Reported
T (Extent of Primary Tumor):	Not Reported
N (Lymph node metastasis):	Not Reported
M (Distant metastasis):	Not Reported
Storage:	Store FFPE tissue sections at +4°C.
Stability:	All FFPE tissue sections are stable for 1 year from date of purchase.

Product images:

4x Image



20x Image