

## Product datasheet for **CS703148**

### Tissue FFPE Sections, Intervertebral disc

#### Product data:

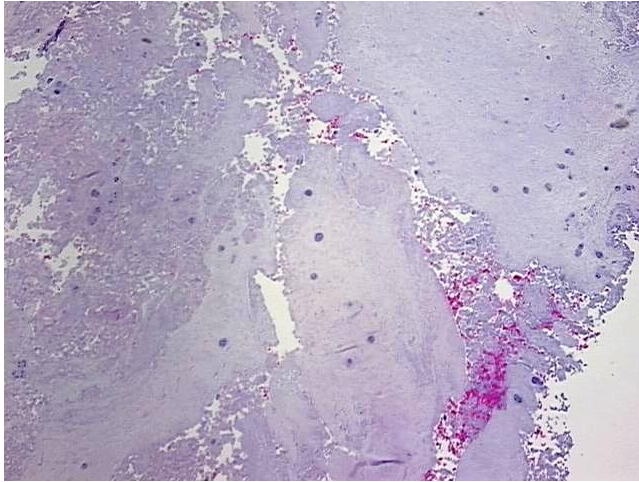
Product Type:	FFPE Sections
Disease State:	Normal
Diagnosis Category:	Normal
Tissue:	Intervertebral disc
Frozen Sample ID:	PA00006BBB
Case ID:	CI0000006578
Tissue of Origin:	Intervertebral disc
Site of Finding:	Intervertebral disc
Appearance:	Normal
Sample Diagnosis (from Pathology Verification):	Within normal limits
Normal:	100%
Lesional:	0%
Tumor:	0%
Tumor Hypo/Acellular Stroma:	0%
Tumor Hypercellular Stroma:	0%
Necrosis:	0%
Pathology Verification notes from H&E review:	20% Chondrocytes, 80% Matrix
CASE Diagnosis (from medical center path report):	Herniated disc
Age:	28
Gender:	Male
Storage:	Store FFPE tissue sections at +4°C.



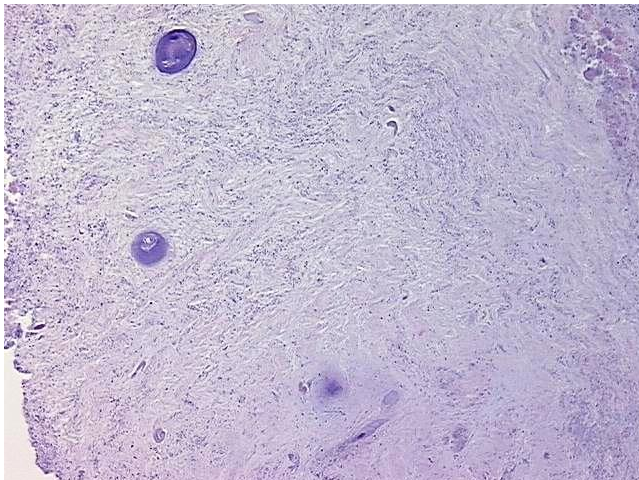
[View online »](#)

Stability: All FFPE tissue sections are stable for 1 year from date of purchase.

**Product images:**



4x Image



20x Image