

## Product datasheet for CS702929

### Tissue FFPE Sections, Endometriotic tissue

#### Product data:

Product Type:	FFPE Sections
Disease State:	Other Disease
Diagnosis Category:	Adenosis
Tissue:	Myometrium
Frozen Sample ID:	PA0000588A
Case ID:	CI0000006275
Tissue of Origin:	Endometriotic tissue
Site of Finding:	Uterus
Appearance:	L
Sample Diagnosis (from Pathology Verification):	Adenomyosis of myometrium
Normal:	90%
Lesional:	10%
Tumor:	0%
Tumor Hypo/Acellular Stroma:	0%
Tumor Hypercellular Stroma:	0%
Necrosis:	0%
Pathology Verification notes from H&E review:	Non Tumor Structures: 10% Glands, 20% Stroma, 70% Myometrium; Other Features/Comments: inactive endometrium
CASE Diagnosis (from medical center path report):	Leiomyoma of myometrium
Age:	58
Gender:	Female
Race:	Not reported

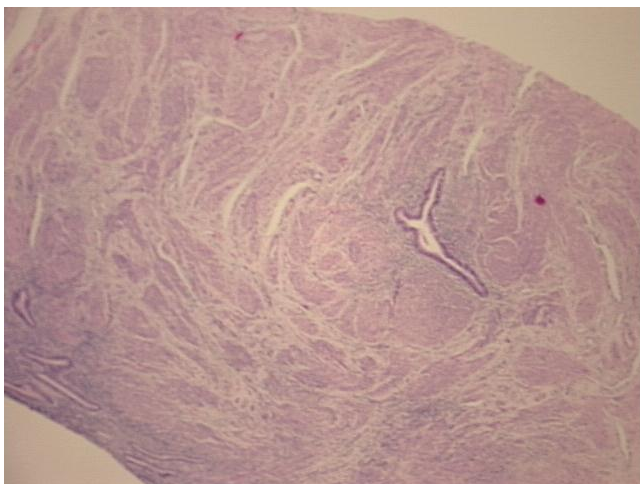


[View online »](#)

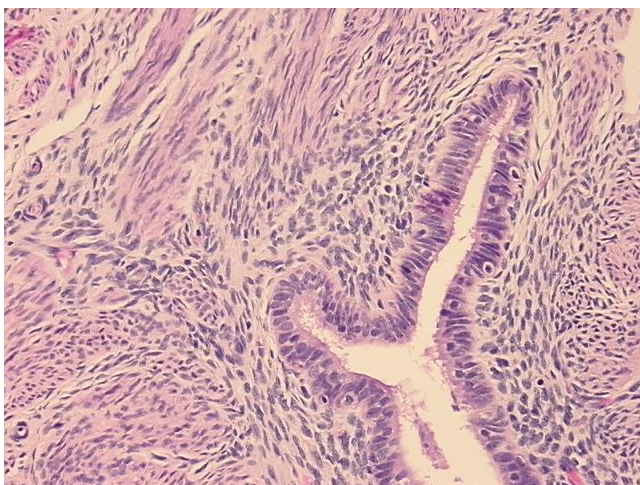
**Storage:** Store FFPE tissue sections at +4°C.

**Stability:** All FFPE tissue sections are stable for 1 year from date of purchase.

**Product images:**



4x Image



20x Image