

## Product datasheet for **CS702830**

### Tissue FFPE Sections, Peritoneum

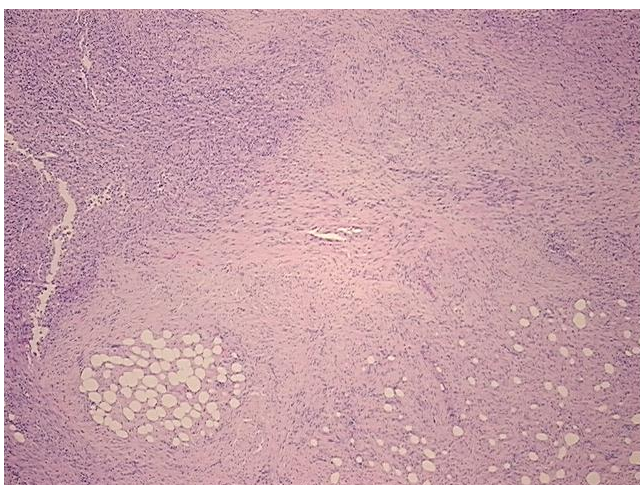
#### Product data:

|                                                   |                           |
|---------------------------------------------------|---------------------------|
| Product Type:                                     | FFPE Sections             |
| Disease State:                                    | Cancer                    |
| Diagnosis Category:                               | Mesothelioma              |
| Tissue:                                           | Lung                      |
| Frozen Sample ID:                                 | PA154774C0                |
| Case ID:                                          | CI0000006163              |
| Tissue of Origin:                                 | Peritoneum                |
| Site of Finding:                                  | Colon                     |
| Appearance:                                       | T                         |
| Sample Diagnosis (from Pathology Verification):   | Mesothelioma of mesentery |
| Normal:                                           | 0%                        |
| Lesional:                                         | 0%                        |
| Tumor:                                            | 70%                       |
| Tumor Hypo/Acellular Stroma:                      | 10%                       |
| Tumor Hypercellular Stroma:                       | 20%                       |
| Necrosis:                                         | 0%                        |
| CASE Diagnosis (from medical center path report): | Mesothelioma of mesentery |
| Age:                                              | 65                        |
| Gender:                                           | Male                      |
| Race:                                             | Not reported              |
| Tumor Grade:                                      | Not Reported              |

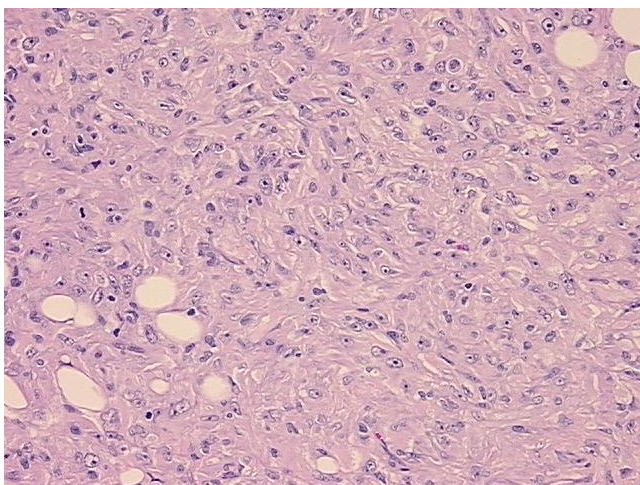


[View online »](#)

|                              |                                                                                                                                                                                                                               |
|------------------------------|-------------------------------------------------------------------------------------------------------------------------------------------------------------------------------------------------------------------------------|
| Minimum Stage Grouping:      | Not Reported                                                                                                                                                                                                                  |
| T (Extent of Primary Tumor): | Not Reported                                                                                                                                                                                                                  |
| N (Lymph node metastasis):   | Not Reported                                                                                                                                                                                                                  |
| M (Distant metastasis):      | Not Reported                                                                                                                                                                                                                  |
| Diagnostic Test Results:     | Cytokeratin CAM5.2 ~ CAM5.2 ! by IHC,Positive; Tumor associated glycoprotein-72 ~ TAG-72 ~ B72.3 antigen ! by IHC,Negative; CD66e ~ CEACAM5 ! by IHC,Negative; CD15 ~ Lewis X ~ Leu M1 ! by IHC,Negative; Calretinin,Positive |
| Storage:                     | Store FFPE tissue sections at +4°C.                                                                                                                                                                                           |
| Stability:                   | All FFPE tissue sections are stable for 1 year from date of purchase.                                                                                                                                                         |

**Product images:**

4x Image



20x Image