

## Product datasheet for **CS702818**

### Tissue FFPE Sections, Ovary

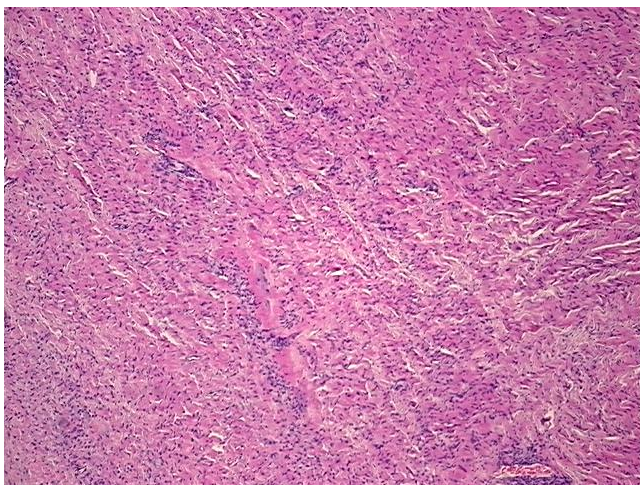
#### Product data:

|   |                           |
|---|---------------------------|
| Product Type:                                     | FFPE Sections             |
| Disease State:                                    | Other Disease             |
| Diagnosis Category:                               | Benign Tumors             |
| Tissue:   | Ovary                     |
| Frozen Sample ID:                                 | PA00004C51                |
| Case ID:  | CI0000006150              |
| Tissue of Origin:                                 | Ovary                     |
| Site of Finding:                                  | Ovary                     |
| Appearance:                                       | T                         |
| Sample Diagnosis (from Pathology Verification):   | Cystadenofibroma of ovary |
| Normal:   | 0%                        |
| Lesional:   | 0%                        |
| Tumor:  | 100%                      |
| Tumor Hypo/Acellular Stroma:                      | 0%                        |
| Tumor Hypercellular Stroma:                       | 0%                        |
| Necrosis:   | 0%                        |
| Pathology Verification notes from H&E review:     | benign fibrous tumor      |
| CASE Diagnosis (from medical center path report): | Adenocarcinoma of colon   |
| Age:  | 59                        |
| Gender:   | Female                    |
| Race:   | White or Caucasian        |

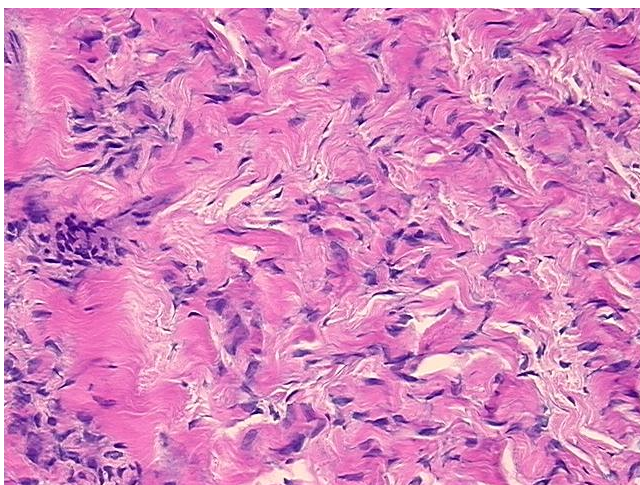


[View online »](#)

|                              |   |
|------------------------------|---|
| Tumor Grade:                 | AJCC G2: Moderately differentiated                                    |
| Minimum Stage Grouping:      | IIB   |
| T (Extent of Primary Tumor): | T4  |
| N (Lymph node metastasis):   | N0  |
| M (Distant metastasis):      | MX  |
| Storage:                     | Store FFPE tissue sections at +4°C.                                   |
| Stability:                   | All FFPE tissue sections are stable for 1 year from date of purchase. |

**Product images:**

4x Image



20x Image