

## Product datasheet for **CS702809**

### Tissue FFPE Sections, Small intestine

#### Product data:

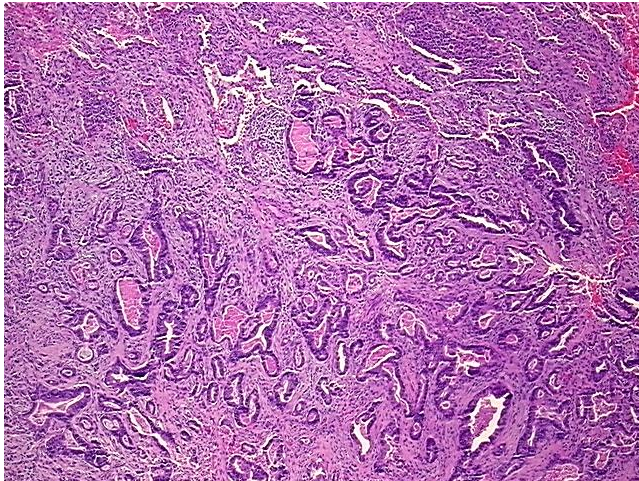
Product Type:	FFPE Sections
Disease State:	Cancer
Diagnosis Category:	Small Intestine Cancer
Tissue:	Small intestine
Frozen Sample ID:	PA00005374
Case ID:	CI0000006144
Tissue of Origin:	Small intestine
Site of Finding:	Lung
Appearance:	T
Sample Diagnosis (from Pathology Verification):	Adenocarcinoma of small intestine, metastatic
Normal:	0%
Lesional:	60%
Tumor:	40%
Tumor Hypo/Acellular Stroma:	0%
Tumor Hypercellular Stroma:	0%
Necrosis:	0%
Pathology Verification notes from H&E review:	lesion: consolidation and hemorrhage with no residual normal architecture
CASE Diagnosis (from medical center path report):	Adenocarcinoma of small intestine, metastatic
Age:	57
Gender:	Male
Race:	Not reported



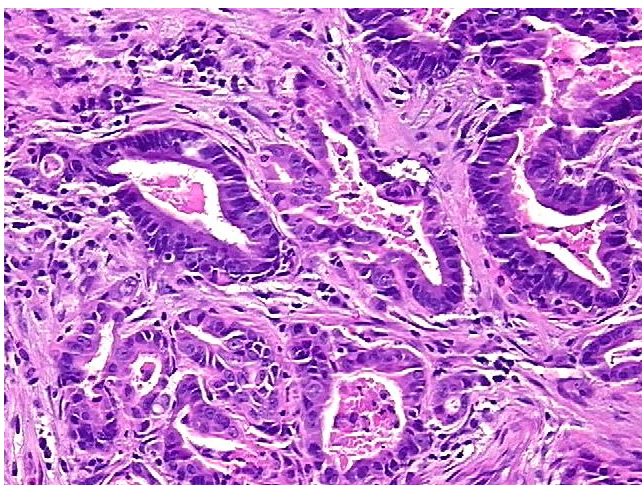
[View online »](#)

<b>Tumor Grade:</b>	AJCC G2: Moderately differentiated
<b>Minimum Stage Grouping:</b>	IV
<b>T (Extent of Primary Tumor):</b>	TX
<b>N (Lymph node metastasis):</b>	NX
<b>M (Distant metastasis):</b>	M1
<b>Diagnostic Test Results:</b>	GMS ~ Grocott methenamine silver stain,Negative; Acid-fast bacteria ~ AFB ~ Ziehl-Neelsen acid fast,Negative; Cytokeratin 7 ~ CK7 ! by IHC,Negative; Cytokeratin 20 ~ CK20 ! by IHC,Positive; Thyroid transcription factor 1 ~ TTF1 ! by IHC,Positi
<b>Storage:</b>	Store FFPE tissue sections at +4°C.
<b>Stability:</b>	All FFPE tissue sections are stable for 1 year from date of purchase.

### Product images:



4x Image



20x Image