

Product datasheet for **CS702798**

Tissue FFPE Sections, Stomach

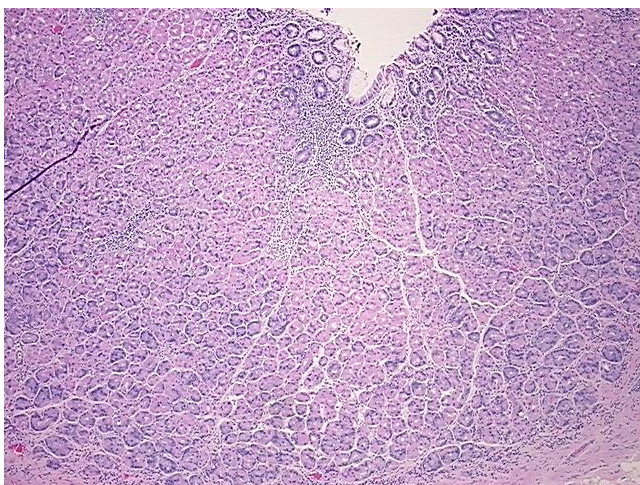
Product data:

Product Type:	FFPE Sections
Disease State:	Other Disease
Diagnosis Category:	Gastritis
Tissue:	Stomach
Frozen Sample ID:	PA0F333C31
Case ID:	CI0000006134
Tissue of Origin:	Stomach
Site of Finding:	Stomach
Appearance:	L
Sample Diagnosis (from Pathology Verification):	Gastritis, chronic
Normal:	0%
Lesional:	100%
Tumor:	0%
Tumor Hypo/Acellular Stroma:	0%
Tumor Hypercellular Stroma:	0%
Necrosis:	0%
Pathology Verification notes from H&E review:	Inflammation: Mild Lymphoplasmacytic infiltrate; Non Tumor Structures: 80% Mucosa, 15% Submucosa, 5% Muscle
CASE Diagnosis (from medical center path report):	Gastrointestinal stromal tumor of stomach
Age:	70
Gender:	Male
Race:	Not reported

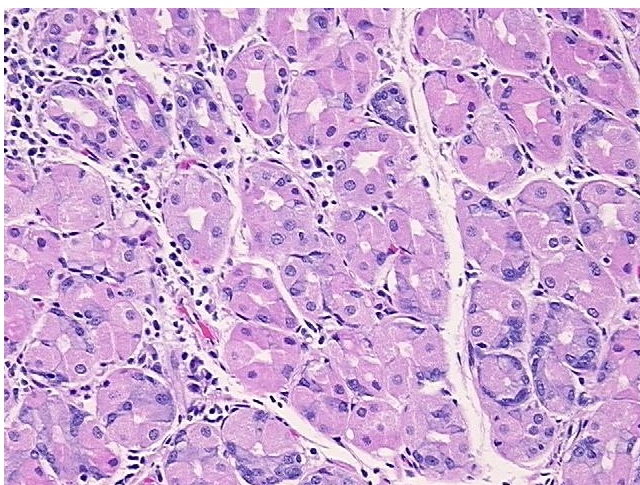


[View online »](#)

Tumor Grade:	Not Reported
Minimum Stage Grouping:	Not Reported
T (Extent of Primary Tumor):	Not Reported
N (Lymph node metastasis):	Not Reported
M (Distant metastasis):	Not Reported
Diagnostic Test Results:	S100 protein,Negative; Desmin ! by IHC,Negative; MSA ~ Muscle Specific Actin,Negative; CD117 ~ C-kit ~ SCFR ! by IHC,Positive
Storage:	Store FFPE tissue sections at +4°C.
Stability:	All FFPE tissue sections are stable for 1 year from date of purchase.

Product images:

4x Image



20x Image