

## Product datasheet for **CS702464**

### Tissue FFPE Sections, Lung

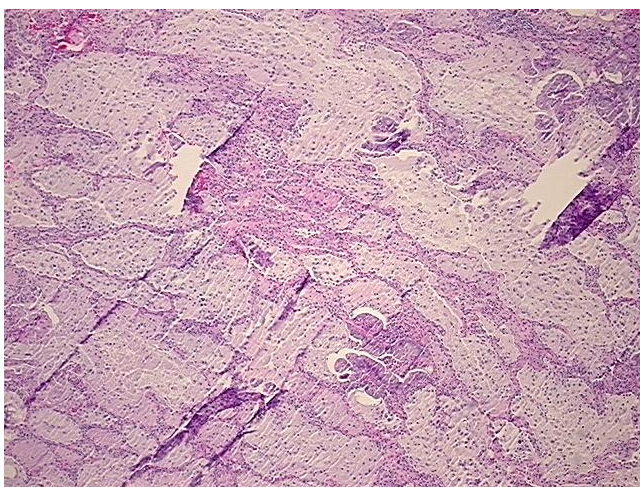
#### Product data:

|   |  |
|---|--|
| Product Type:                                     | FFPE Sections  |
| Disease State:                                    | Cancer   |
| Diagnosis Category:                               | Lung Cancer  |
| Tissue:   | Lung   |
| Frozen Sample ID:                                 | PA1547770F   |
| Case ID:  | CI0000005944   |
| Tissue of Origin:                                 | Lung   |
| Site of Finding:                                  | Lung   |
| Appearance:                                       | T  |
| Sample Diagnosis (from Pathology Verification):   | Adenocarcinoma of lung   |
| Normal:   | 5%   |
| Lesional:   | 0%   |
| Tumor:  | 25%  |
| Tumor Hypo/Acellular Stroma:                      | 40%  |
| Tumor Hypercellular Stroma:                       | 30%  |
| Necrosis:   | 0%   |
| Pathology Verification notes from H&E review:     | adenocarcinoma with broncho-alveolar features; hypocellular tumor stroma: mucinous |
| CASE Diagnosis (from medical center path report): | Adenocarcinoma of lung   |
| Age:  | 62   |
| Gender:   | Female   |
| Race:   | Not reported   |

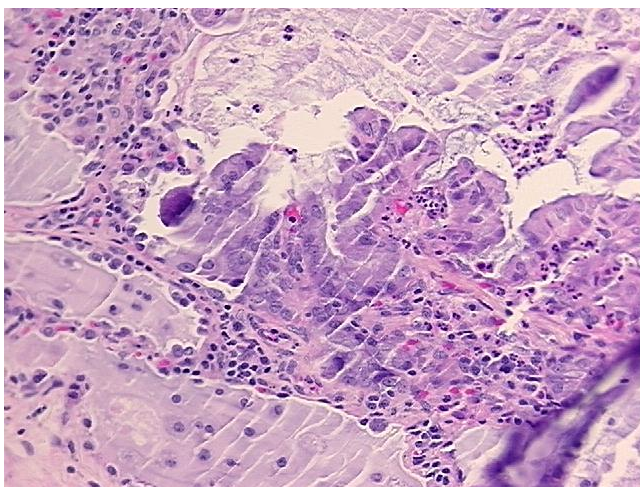


[View online »](#)

|                              |   |
|------------------------------|---|
| Tumor Grade:                 | AJCC G1: Well differentiated  |
| Minimum Stage Grouping:      | IB  |
| T (Extent of Primary Tumor): | T2  |
| N (Lymph node metastasis):   | N0  |
| M (Distant metastasis):      | MX  |
| Storage:                     | Store FFPE tissue sections at +4°C.                                   |
| Stability:                   | All FFPE tissue sections are stable for 1 year from date of purchase. |

**Product images:**

4x Image



20x Image