

## Product datasheet for **CS702404**

### Tissue FFPE Sections, Bone: femur, head

#### Product data:

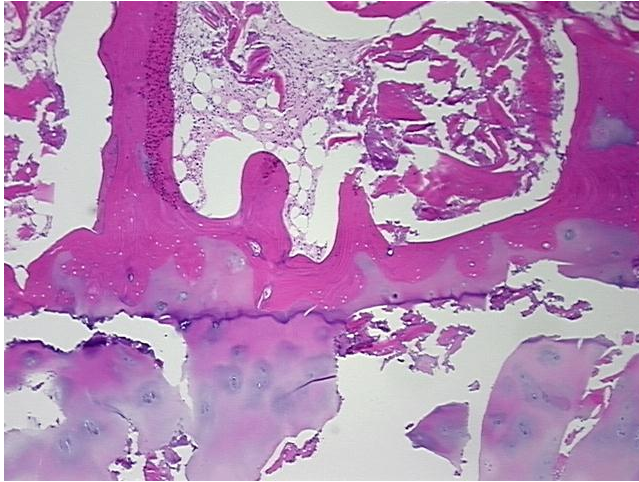
|   |   |
|---|---|
| Product Type:                                     | FFPE Sections   |
| Disease State:                                    | Other Disease   |
| Diagnosis Category:                               | Arthritis   |
| Tissue:   | Bone  |
| Frozen Sample ID:                                 | PA000046C0  |
| Case ID:  | CI0000005923  |
| Tissue of Origin:                                 | Bone: femur, head   |
| Site of Finding:                                  | Bone: femur, head   |
| Appearance:                                       | L   |
| Sample Diagnosis (from Pathology Verification):   | Degenerative joint disease  |
| Normal:   | 0%  |
| Lesional:   | 100%  |
| Tumor:  | 0%  |
| Tumor Hypo/Acellular Stroma:                      | 0%  |
| Tumor Hypercellular Stroma:                       | 0%  |
| Necrosis:   | 0%  |
| Pathology Verification notes from H&E review:     | Non Tumor Structures: 10% Articular cartilage, 40% Bone, 50% Fatty marrow |
| CASE Diagnosis (from medical center path report): | Degenerative joint disease  |
| Age:  | 77  |
| Gender:   | Male  |
| Storage:  | Store FFPE tissue sections at +4°C.                                       |



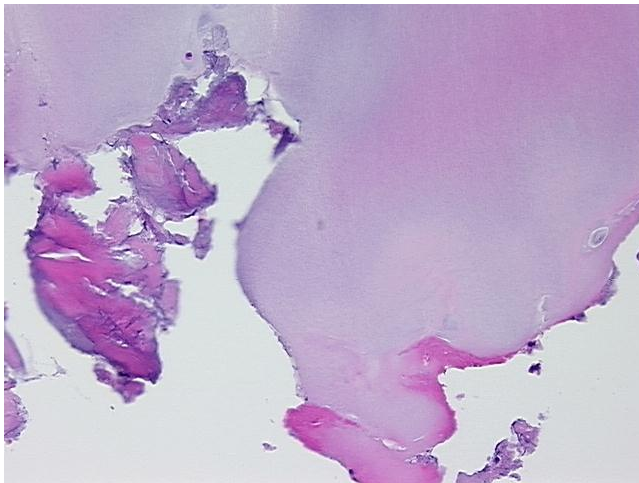
[View online »](#)

Stability: All FFPE tissue sections are stable for 1 year from date of purchase.

**Product images:**



4x Image



20x Image