

## Product datasheet for **CS702386**

### Tissue FFPE Sections, Stomach

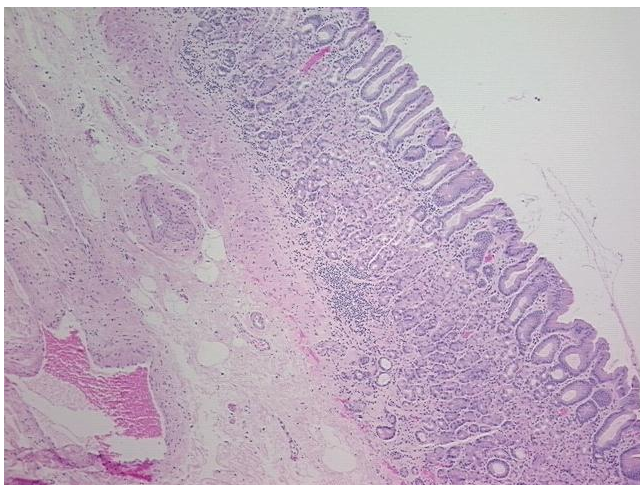
#### Product data:

Product Type:	FFPE Sections
Disease State:	Normal
Diagnosis Category:	Normal
Tissue:	Stomach
Frozen Sample ID:	PA00004ACE
Case ID:	CI0000005902
Tissue of Origin:	Stomach
Site of Finding:	Stomach
Appearance:	R
Sample Diagnosis (from Pathology Verification):	Within normal limits
Normal:	100%
Lesional:	0%
Tumor:	0%
Tumor Hypo/Acellular Stroma:	0%
Tumor Hypercellular Stroma:	0%
Necrosis:	0%
Pathology Verification notes from H&E review:	20% mucosa, 15% submucosa, 65% muscle
CASE Diagnosis (from medical center path report):	Glandular dysplasia of gastroesophageal junction
Age:	52
Gender:	Female
Race:	Not reported

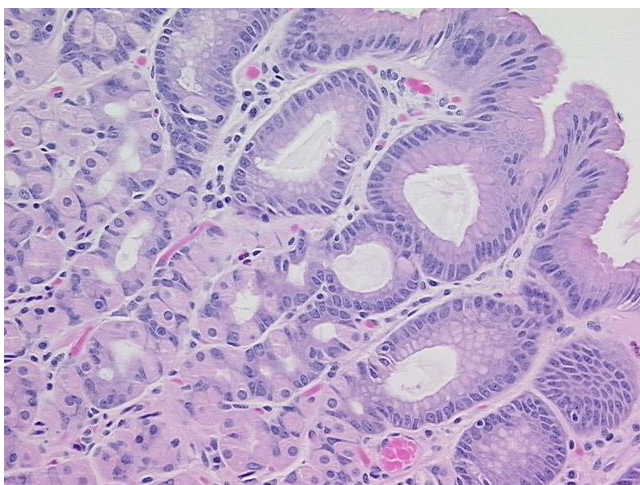


[View online »](#)

Tumor Grade:	Not Reported
T (Extent of Primary Tumor):	Tis
N (Lymph node metastasis):	N0
M (Distant metastasis):	MX
Storage:	Store FFPE tissue sections at +4°C.
Stability:	All FFPE tissue sections are stable for 1 year from date of purchase.

**Product images:**

4x Image



20x Image