

## Product datasheet for **CS702087**

### Tissue FFPE Sections, Myometrium

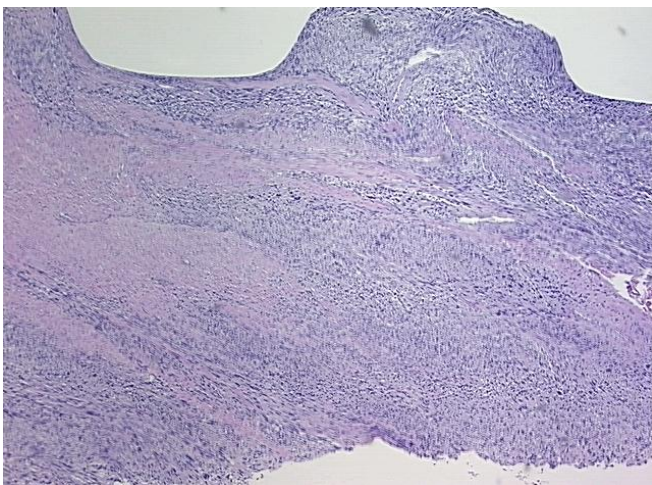
#### Product data:

|   |                    |
|---|--------------------|
| Product Type:                                     | FFPE Sections      |
| Disease State:                                    | Cancer             |
| Diagnosis Category:                               | Sarcoma            |
| Tissue:   | Myometrium         |
| Frozen Sample ID:                                 | PA11B416F8         |
| Case ID:  | CI0000005653       |
| Tissue of Origin:                                 | Myometrium         |
| Site of Finding:                                  | Myometrium         |
| Appearance:                                       | T                  |
| Sample Diagnosis (from Pathology Verification):   | Leiomyosarcoma     |
| Normal:   | 20%                |
| Lesional:   | 0%                 |
| Tumor:  | 80%                |
| Tumor Hypo/Acellular Stroma:                      | 0%                 |
| Tumor Hypercellular Stroma:                       | 0%                 |
| Necrosis:   | 0%                 |
| CASE Diagnosis (from medical center path report): | Leiomyosarcoma     |
| Age:  | 50                 |
| Gender:   | Female             |
| Race:   | White or Caucasian |
| Tumor Grade:                                      | Not Reported       |

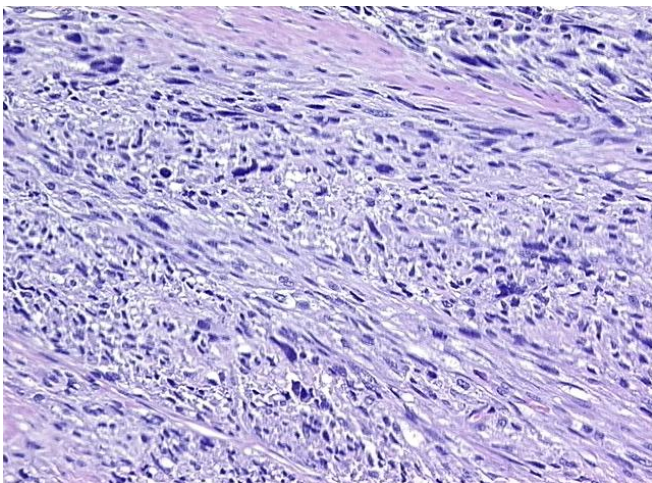


[View online »](#)

|                              |   |
|------------------------------|---|
| Minimum Stage Grouping:      | IIB   |
| T (Extent of Primary Tumor): | T2b   |
| N (Lymph node metastasis):   | NX  |
| M (Distant metastasis):      | MX  |
| Storage:                     | Store FFPE tissue sections at +4°C.                                   |
| Stability:                   | All FFPE tissue sections are stable for 1 year from date of purchase. |

**Product images:**

4x Image



20x Image