

## Product datasheet for **CS701952**

### Tissue FFPE Sections, Gastroesophageal junction

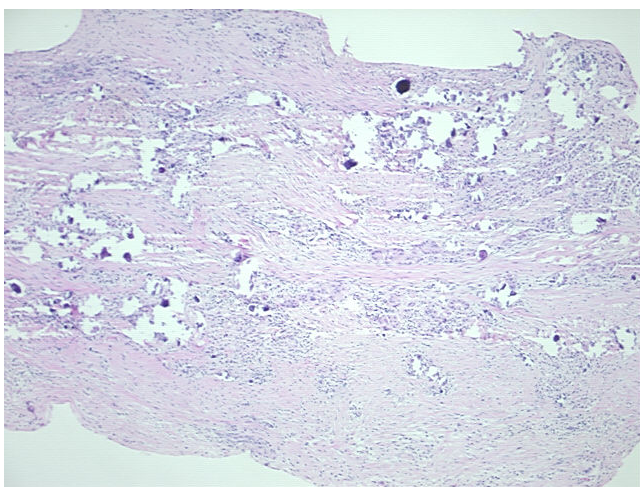
#### Product data:

Product Type:	FFPE Sections
Disease State:	Cancer
Diagnosis Category:	Esophageal/Gastroesophageal Cancer
Tissue:	Gastroesophageal junction
Frozen Sample ID:	PA00004CD0
Case ID:	CI0000005594
Tissue of Origin:	Gastroesophageal junction
Site of Finding:	Esophagus
Appearance:	T
Sample Diagnosis (from Pathology Verification):	Adenocarcinoma of gastroesophageal junction
Normal:	55%
Lesional:	0%
Tumor:	40%
Tumor Hypo/Acellular Stroma:	0%
Tumor Hypercellular Stroma:	5%
Necrosis:	0%
Pathology Verification notes from H&E review:	dystrophic calcification present in tumor; 65% normal component consists of muscle that is infiltrated by tumor
CASE Diagnosis (from medical center path report):	Adenocarcinoma of gastroesophageal junction
Age:	47
Gender:	Male
Race:	White or Caucasian

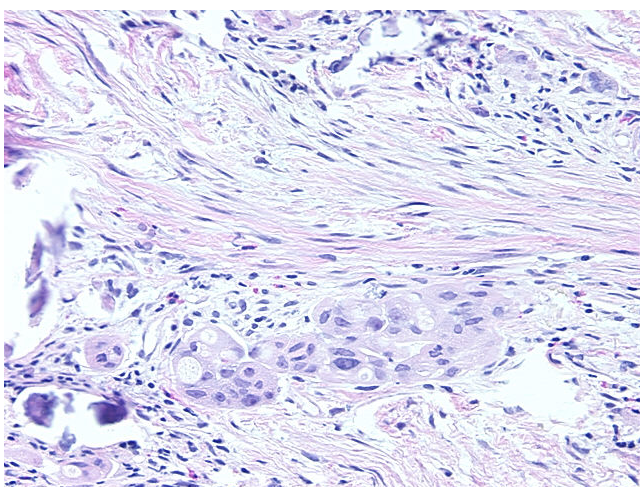


[View online »](#)

Tumor Grade:	AJCC G3: Poorly differentiated
Minimum Stage Grouping:	III
T (Extent of Primary Tumor):	T3
N (Lymph node metastasis):	N1
M (Distant metastasis):	MX
Storage:	Store FFPE tissue sections at +4°C.
Stability:	All FFPE tissue sections are stable for 1 year from date of purchase.

**Product images:**

4x Image



20x Image