

## Product datasheet for **CS701852**

### Tissue FFPE Sections, Endometriotic tissue

#### Product data:

Product Type:	FFPE Sections
Disease State:	Other Disease
Diagnosis Category:	Endometriosis
Tissue:	Endometriotic tissue
Frozen Sample ID:	PA00004597
Case ID:	CI0000005536
Tissue of Origin:	Endometriotic tissue
Site of Finding:	Ovary: right
Appearance:	L
Sample Diagnosis (from Pathology Verification):	Endometriosis
Normal:	90%
Lesional:	10%
Tumor:	0%
Tumor Hypo/Acellular Stroma:	0%
Tumor Hypercellular Stroma:	0%
Necrosis:	0%
Pathology Verification notes from H&E review:	80% ovarian stroma, 10% hilar vessels; attenuated epithelial and stromal lining of the endometriotic cyst with pigmented histiocytes (psuedoxanthoma cells) in stroma consistent with endometriotic cyst (endometriosis) present
CASE Diagnosis (from medical center path report):	Endometriosis
Age:	27
Gender:	Female



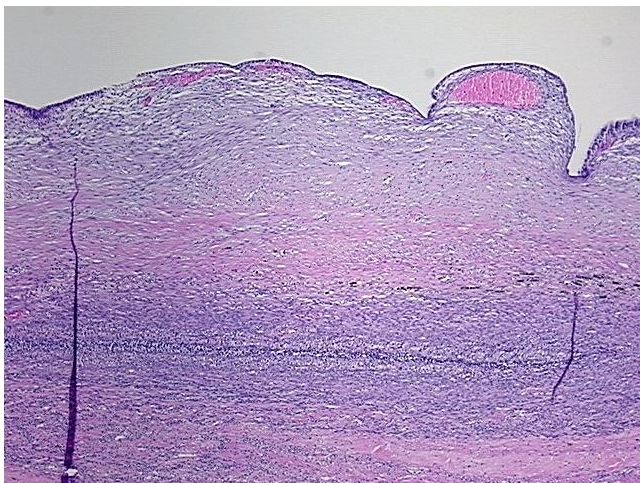
[View online »](#)

Race: White or Caucasian

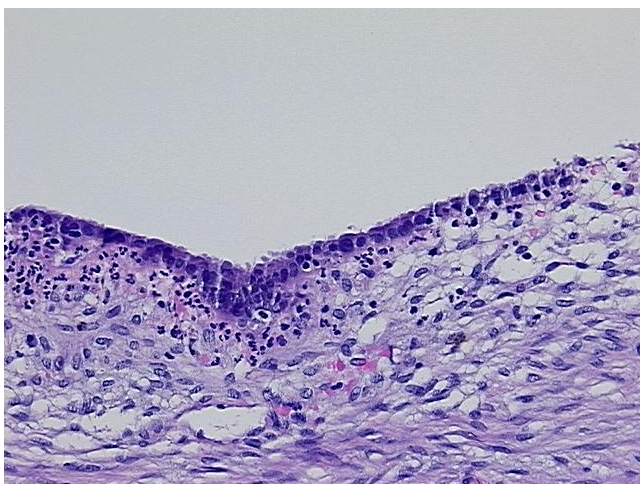
Storage: Store FFPE tissue sections at +4°C.

Stability: All FFPE tissue sections are stable for 1 year from date of purchase.

### Product images:



4x Image



20x Image