

Product datasheet for **CS701639**

Tissue FFPE Sections, Lung

Product data:

Product Type:	FFPE Sections
Disease State:	Other Disease
Diagnosis Category:	Inflammation (various)
Tissue:	Lung
Frozen Sample ID:	PA00004369
Case ID:	CI0000005398
Tissue of Origin:	Lung
Site of Finding:	Lung
Appearance:	L
Sample Diagnosis (from Pathology Verification):	Pneumonitis, granulomatous
Normal:	0%
Lesional:	100%
Tumor:	0%
Tumor Hypo/Acellular Stroma:	0%
Tumor Hypercellular Stroma:	0%
Necrosis:	0%
Pathology Verification notes from H&E review:	Inflammation: Mild Lymphoplasmacytic infiltrate; Non Tumor Structures: 35% Alveoli, 15% Bronchioles, 50% Fibrovascular septa
CASE Diagnosis (from medical center path report):	Pneumonitis, granulomatous
Age:	71
Gender:	Male
Race:	Not reported



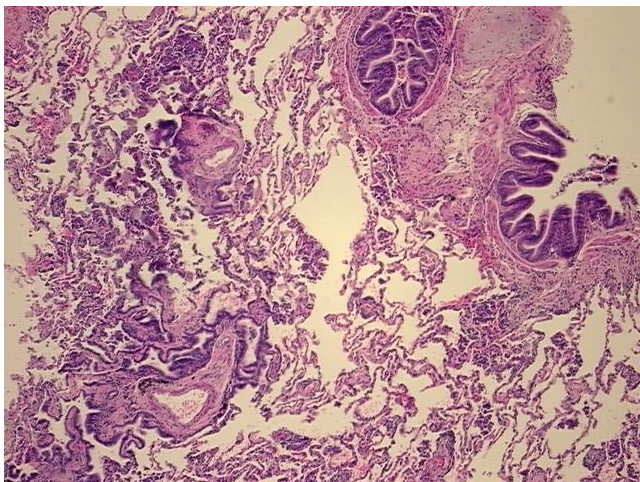
[View online »](#)

Diagnostic Test Results: GMS ~ Grocott methenamine silver stain,Negative; Acid-fast bacteria ~ AFB ~ Ziehl-Neelsen acid fast,Negative

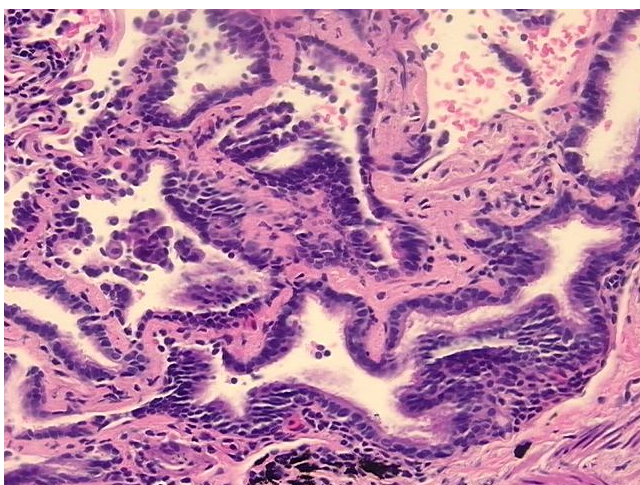
Storage: Store FFPE tissue sections at +4°C.

Stability: All FFPE tissue sections are stable for 1 year from date of purchase.

Product images:



4x Image



20x Image