

Product datasheet for **CS701601**

Tissue FFPE Sections, Breast

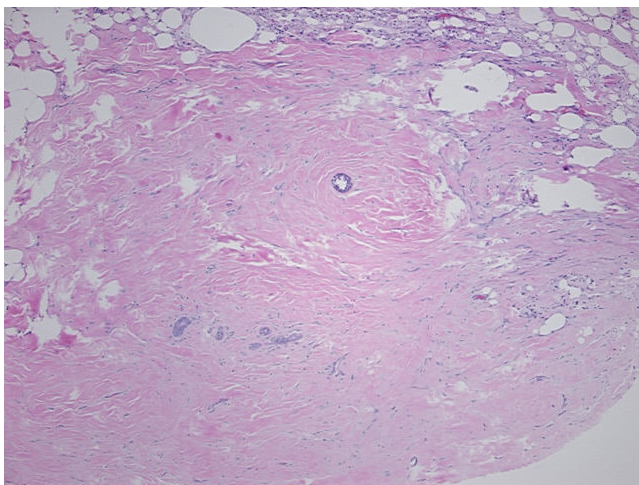
Product data:

| | |
|---|--|
| Product Type: | FFPE Sections |
| Disease State: | Other Disease |
| Diagnosis Category: | Biopsy Site Changes |
| Tissue: | Breast |
| Frozen Sample ID: | PA0000415F |
| Case ID: | CI0000005367 |
| Tissue of Origin: | Breast |
| Site of Finding: | Breast |
| Appearance: | L |
| Sample Diagnosis (from Pathology Verification): | Biopsy site changes |
| Normal: | 0% |
| Lesional: | 100% |
| Tumor: | 0% |
| Tumor Hypo/Acellular Stroma: | 0% |
| Tumor Hypercellular Stroma: | 0% |
| Necrosis: | 0% |
| Pathology Verification notes from H&E review: | 1% glandular epithelium, 25% stroma, 74% fat with traumatic fat necrosis |
| CASE Diagnosis (from medical center path report): | Carcinoma in situ of breast, ductal |
| Age: | 52 |
| Gender: | Female |
| Race: | Not reported |

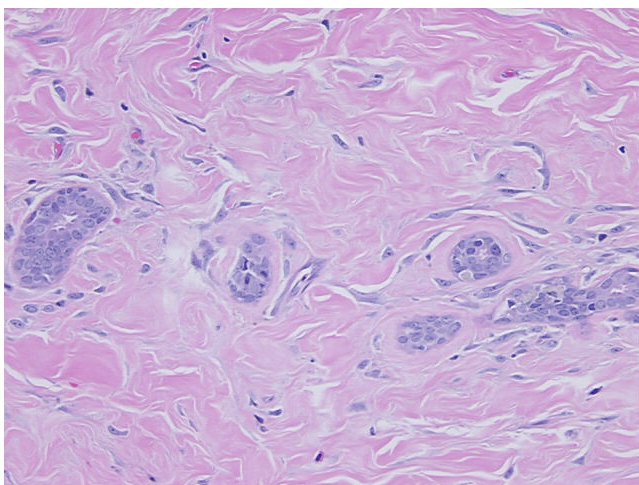


[View online »](#)

| | |
|------------------------------|---|
| Tumor Grade: | Nottingham G3: 8-9 points High combined grade (unfavorable) |
| T (Extent of Primary Tumor): | Tis |
| N (Lymph node metastasis): | N0 |
| M (Distant metastasis): | MX |
| Storage: | Store FFPE tissue sections at +4°C. |
| Stability: | All FFPE tissue sections are stable for 1 year from date of purchase. |

Product images:

4x Image



20x Image