

Product datasheet for CS701560

Tissue FFPE Sections, Cervix

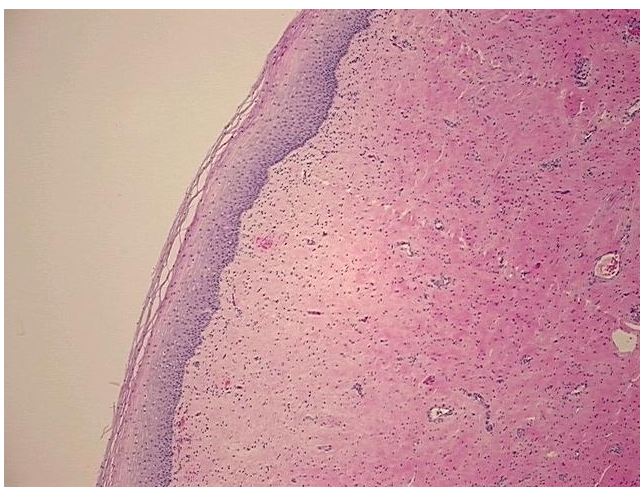
Product data:

Product Type:	FFPE Sections
Disease State:	Normal
Diagnosis Category:	Normal
Tissue:	Cervix
Frozen Sample ID:	PA000040E2
Case ID:	CI0000005328
Tissue of Origin:	Cervix
Site of Finding:	Cervix
Appearance:	R
Sample Diagnosis (from Pathology Verification):	Within normal limits
Normal:	100%
Lesional:	0%
Tumor:	0%
Tumor Hypo/Acellular Stroma:	0%
Tumor Hypercellular Stroma:	0%
Necrosis:	0%
Pathology Verification notes from H&E review:	15% squamous epithelium, 85% fibromuscular stroma, transformation zone (-)
CASE Diagnosis (from medical center path report):	Leiomyoma of myometrium
Age:	45
Gender:	Female
Race:	Not reported

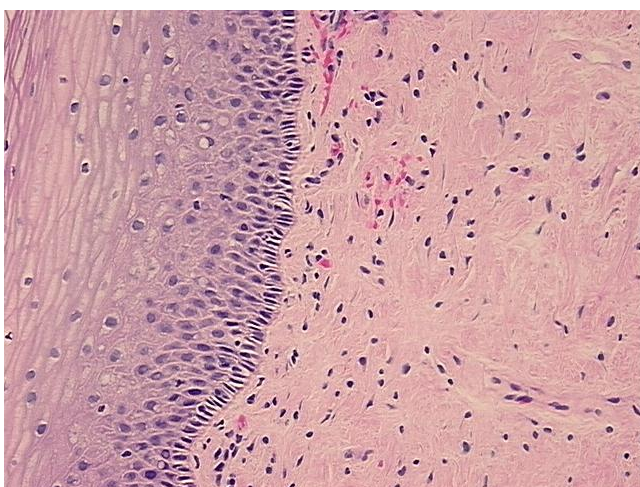


[View online »](#)

Tumor Grade:	Not Reported
Minimum Stage Grouping:	Not Reported
T (Extent of Primary Tumor):	Not Reported
N (Lymph node metastasis):	Not Reported
M (Distant metastasis):	Not Reported
Storage:	Store FFPE tissue sections at +4°C.
Stability:	All FFPE tissue sections are stable for 1 year from date of purchase.

Product images:

4x Image



20x Image