

## Product datasheet for **CS701513**

### Tissue FFPE Sections, Adrenal gland

#### Product data:

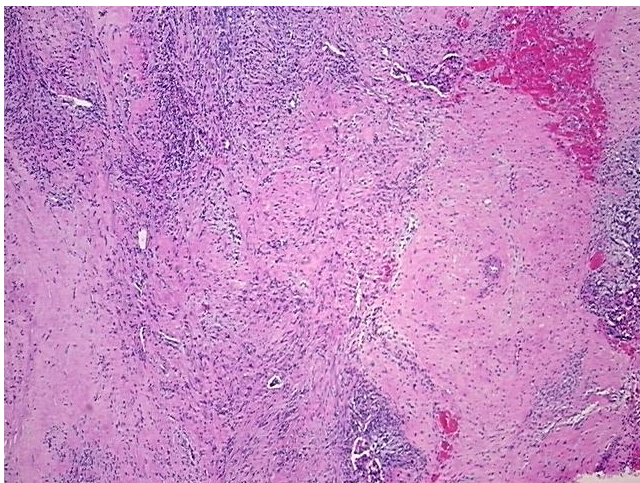
|   |  |
|---|--|
| Product Type:                                     | FFPE Sections  |
| Disease State:                                    | Cancer   |
| Diagnosis Category:                               | Carcinoid/Neuroendocrine Tumors  |
| Tissue:   | Adrenal gland  |
| Frozen Sample ID:                                 | PA15477D62   |
| Case ID:  | CI0000005278   |
| Tissue of Origin:                                 | Adrenal gland  |
| Site of Finding:                                  | Adrenal gland  |
| Appearance:                                       | T  |
| Sample Diagnosis (from Pathology Verification):   | Tumor of adrenal gland, neuroendocrine, composite  |
| Normal:   | 15%  |
| Lesional:   | 0%   |
| Tumor:  | 15%  |
| Tumor Hypo/Acellular Stroma:                      | 60%  |
| Tumor Hypercellular Stroma:                       | 5%   |
| Necrosis:   | 5%   |
| Pathology Verification notes from H&E review:     | Tumor Stroma (Cellular): Inflammatory cells; Tumor Stroma (Hypo/Acellular): Fibrosis, Hemorrhage; Inflammation: Mild Mixed inflammatory infiltrate |
| CASE Diagnosis (from medical center path report): | Tumor of adrenal gland, neuroendocrine, composite  |
| Age:  | 37   |
| Gender:   | Male   |
| Race:   | Not reported   |



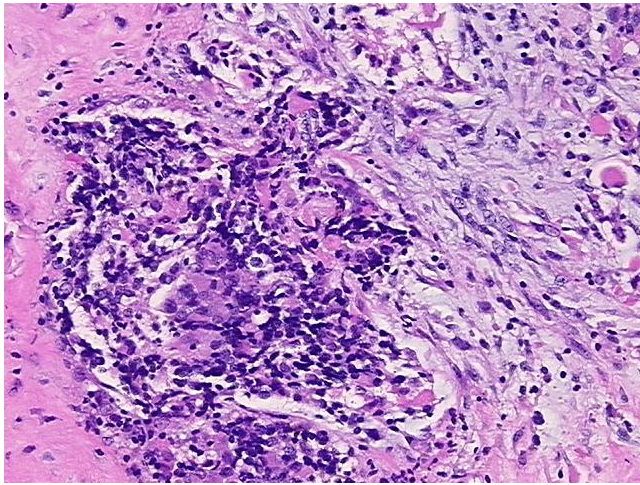
[View online »](#)

|                              |   |
|------------------------------|---|
| Tumor Grade:                 | Not Reported  |
| Minimum Stage Grouping:      | Not Reported  |
| T (Extent of Primary Tumor): | Not Reported  |
| N (Lymph node metastasis):   | Not Reported  |
| M (Distant metastasis):      | Not Reported  |
| Diagnostic Test Results:     | CD227 ~ MUC1 ~ EMA ~ CA15-3 ! by IHC,Positive, focal; Glial Fibrillary Acidic Protein ~ GFAP,Positive, focal; S100 protein,Positive, focal; Synaptophysin ~ SYN ! by IHC,Positive, focal; Cytokeratin CAM5.2 ~ CAM5.2 ! by IHC,Positive; Chromogran |
| Storage:                     | Store FFPE tissue sections at +4°C.   |
| Stability:                   | All FFPE tissue sections are stable for 1 year from date of purchase.   |

### Product images:



4x Image



20x Image