

Product datasheet for **CS701512**

Tissue FFPE Sections, Adrenal gland

Product data:

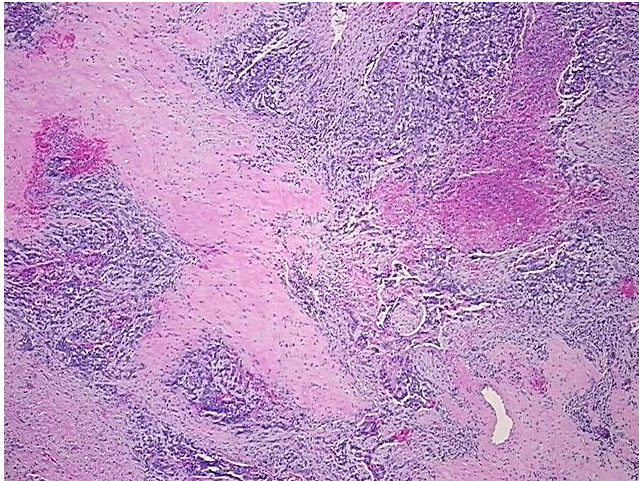
Product Type:	FFPE Sections
Disease State:	Cancer
Diagnosis Category:	Carcinoid/Neuroendocrine Tumors
Tissue:	Adrenal gland
Frozen Sample ID:	PA15477D61
Case ID:	CI0000005278
Tissue of Origin:	Adrenal gland
Site of Finding:	Adrenal gland
Appearance:	T
Sample Diagnosis (from Pathology Verification):	Tumor of adrenal gland, neuroendocrine, composite
Normal:	0%
Lesional:	0%
Tumor:	40%
Tumor Hypo/Acellular Stroma:	15%
Tumor Hypercellular Stroma:	25%
Necrosis:	20%
Pathology Verification notes from H&E review:	Tumor Stroma (Cellular): Desmoplastic reaction, Inflammatory cells; Tumor Stroma (Hypo/Acellular): Fibrosis; Inflammation: Moderate Mixed inflammatory infiltrate
CASE Diagnosis (from medical center path report):	Tumor of adrenal gland, neuroendocrine, composite
Age:	37
Gender:	Male
Race:	Not reported



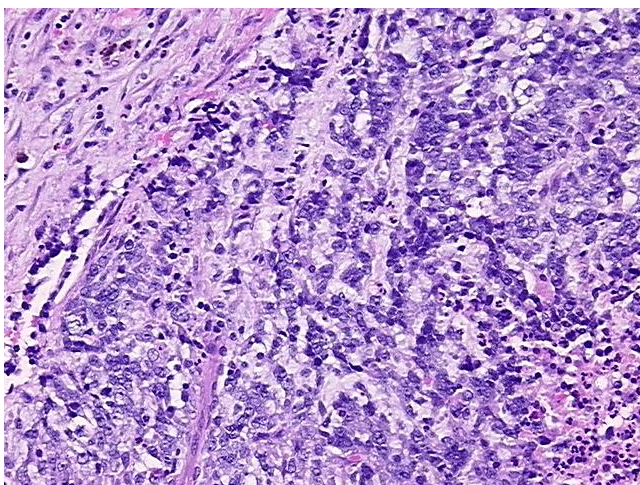
[View online »](#)

Tumor Grade:	Not Reported
Minimum Stage Grouping:	Not Reported
T (Extent of Primary Tumor):	Not Reported
N (Lymph node metastasis):	Not Reported
M (Distant metastasis):	Not Reported
Diagnostic Test Results:	CD227 ~ MUC1 ~ EMA ~ CA15-3 ! by IHC,Positive, focal; Glial Fibrillary Acidic Protein ~ GFAP,Positive, focal; S100 protein,Positive, focal; Synaptophysin ~ SYN ! by IHC,Positive, focal; Cytokeratin CAM5.2 ~ CAM5.2 ! by IHC,Positive; Chromogran
Storage:	Store FFPE tissue sections at +4°C.
Stability:	All FFPE tissue sections are stable for 1 year from date of purchase.

Product images:



4x Image



20x Image