

## Product datasheet for **CS701363**

### Tissue FFPE Sections, Lung

#### Product data:

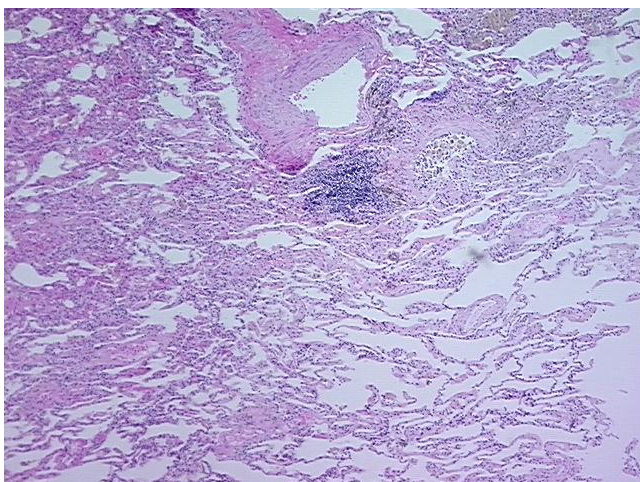
|   |   |
|---|---|
| Product Type:                                     | FFPE Sections   |
| Disease State:                                    | Other Disease   |
| Diagnosis Category:                               | Inflammation (various)  |
| Tissue:   | Lung  |
| Frozen Sample ID:                                 | PA0F333904  |
| Case ID:  | CI0000005161  |
| Tissue of Origin:                                 | Lung  |
| Site of Finding:                                  | Lung  |
| Appearance:                                       | L   |
| Sample Diagnosis (from Pathology Verification):   | Pneumonitis, chronic  |
| Normal:   | 0%  |
| Lesional:   | 100%  |
| Tumor:  | 0%  |
| Tumor Hypo/Acellular Stroma:                      | 0%  |
| Tumor Hypercellular Stroma:                       | 0%  |
| Necrosis:   | 0%  |
| Pathology Verification notes from H&E review:     | Lesion (100%): Pneumonitis, chronic 100%; Inflammation: Mild Lymphoid infiltrate, Mild Macrophages; Non Tumor Structures: 75% Alveoli, 10% Bronchioles, 15% Fibrovascular septa |
| CASE Diagnosis (from medical center path report): | Malignant melanoma, metastatic  |
| Age:  | 42  |
| Gender:   | Female  |
| Race:   | White or Caucasian  |



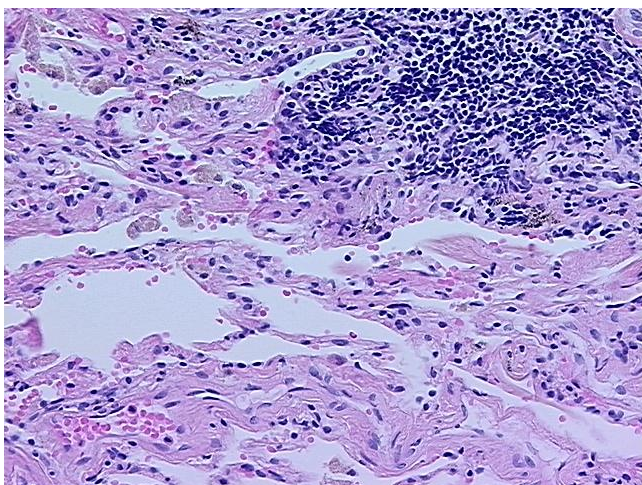
[View online »](#)

|                              |   |
|------------------------------|---|
| Tumor Grade:                 | Not Reported  |
| Minimum Stage Grouping:      | IV  |
| T (Extent of Primary Tumor): | TX  |
| N (Lymph node metastasis):   | NX  |
| M (Distant metastasis):      | M1c   |
| Diagnostic Test Results:     | Cytokeratin (Pan) ~ Keratin, Pan ! by IHC,Positive; MART-1 ~ Melanoma Marker ~ Melan-A,Positive; Thyroglobulin ~ TGB ~ THYRO,Negative; HMB45 melanoma antigen ~ GP100 ! by IHC,Negative; S100 protein,Positive; Cytokeratin 7 ~ CK7 ! by IHC,Nega |
| Storage:                     | Store FFPE tissue sections at +4°C.   |
| Stability:                   | All FFPE tissue sections are stable for 1 year from date of purchase.   |

### Product images:



4x Image



20x Image