

## Product datasheet for **CS701314**

### Tissue FFPE Sections, Endometrium

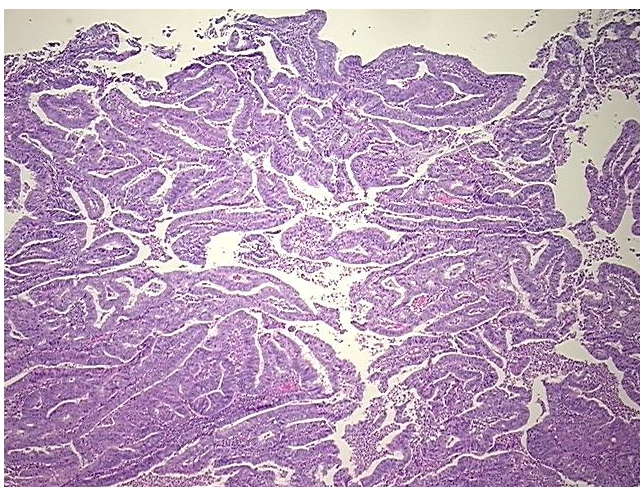
#### Product data:

Product Type:	FFPE Sections
Disease State:	Cancer
Diagnosis Category:	Endometrial Cancer
Tissue:	Endometrium
Frozen Sample ID:	PA15478177
Case ID:	CI0000005109
Tissue of Origin:	Endometrium
Site of Finding:	Uterus
Appearance:	T
Sample Diagnosis (from Pathology Verification):	Adenocarcinoma of endometrium, endometrioid
Normal:	0%
Lesional:	0%
Tumor:	85%
Tumor Hypo/Acellular Stroma:	0%
Tumor Hypercellular Stroma:	10%
Necrosis:	5%
CASE Diagnosis (from medical center path report):	Adenocarcinoma of endometrium, endometrioid
Age:	67
Gender:	Female
Race:	White or Caucasian
Tumor Grade:	FIGO G3: Poorly differentiated

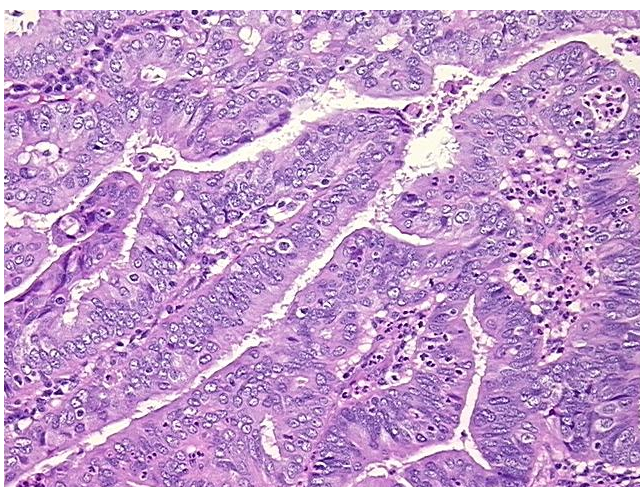


[View online »](#)

Minimum Stage Grouping:	IIIC
T (Extent of Primary Tumor):	T3a
N (Lymph node metastasis):	N1
M (Distant metastasis):	MX
Diagnostic Test Results:	HER2 ~ ERBB2 ~ Neu ! by IHC,Negative
Storage:	Store FFPE tissue sections at +4°C.
Stability:	All FFPE tissue sections are stable for 1 year from date of purchase.

**Product images:**

4x Image



20x Image