

Product datasheet for **CS701117**

Tissue FFPE Sections, Duodenum

Product data:

Product Type:	FFPE Sections
Disease State:	Other Disease
Diagnosis Category:	Inflammation (various)
Tissue:	Small intestine
Frozen Sample ID:	PA0000230B
Case ID:	CI0000000479
Tissue of Origin:	Duodenum
Site of Finding:	Duodenum
Appearance:	L
Sample Diagnosis (from Pathology Verification):	Enteritis, chronic inactive
Normal:	0%
Lesional:	100%
Tumor:	0%
Tumor Hypo/Acellular Stroma:	0%
Tumor Hypercellular Stroma:	0%
Necrosis:	0%
Pathology Verification notes from H&E review:	Inflammation: Mild Lymphoplasmacytic infiltrate; Non Tumor Structures: 40% Mucosa, 30% Submucosa, 30% Muscle
CASE Diagnosis (from medical center path report):	Pancreatitis, chronic
Age:	37
Gender:	Male
Race:	Not reported

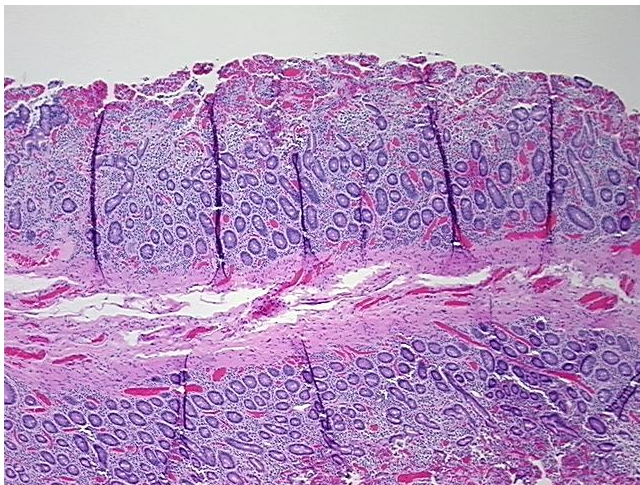


[View online »](#)

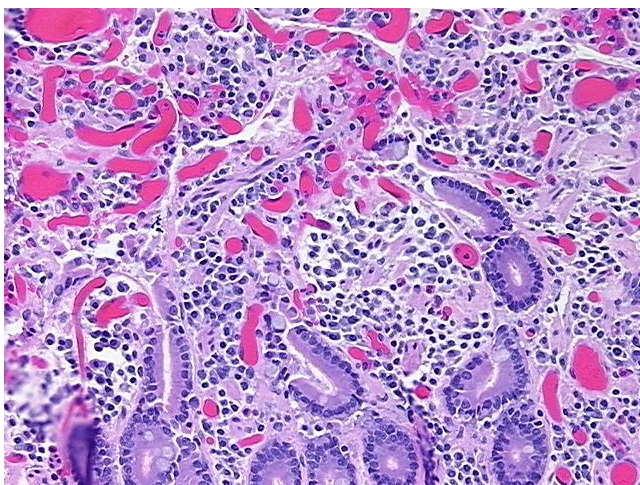
Storage: Store FFPE tissue sections at +4°C.

Stability: All FFPE tissue sections are stable for 1 year from date of purchase.

Product images:



4x Image



20x Image