

## Product datasheet for CS701074

### Tissue FFPE Sections, Ovary: bilateral

#### Product data:

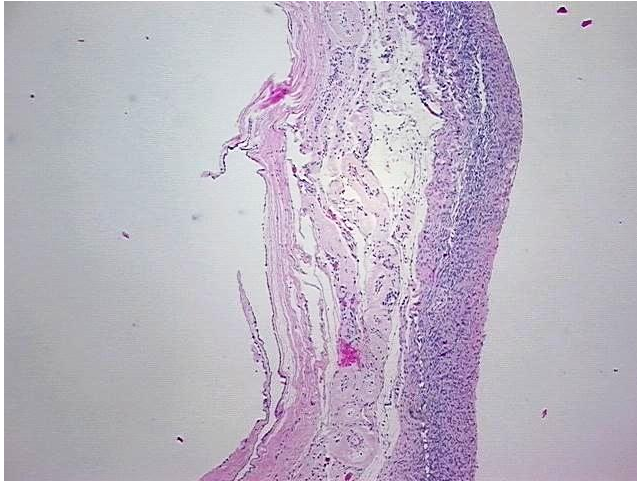
Product Type:	FFPE Sections
Disease State:	Other Disease
Diagnosis Category:	Cysts
Tissue:	Ovary
Frozen Sample ID:	PA000022A1
Case ID:	CI0000000466
Tissue of Origin:	Ovary: bilateral
Site of Finding:	Ovary
Appearance:	Lesion
Sample Diagnosis (from Pathology Verification):	Cyst of ovary
Normal:	40%
Lesional:	60%
Tumor:	0%
Tumor Hypo/Acellular Stroma:	0%
Tumor Hypercellular Stroma:	0%
Necrosis:	0%
Pathology Verification notes from H&E review:	Non Tumor Structures: 40% Ovarian stroma, 57% cyst wall, 3% cyst lining
CASE Diagnosis (from medical center path report):	Cyst of ovary
Age:	63
Gender:	Female
Storage:	Store FFPE tissue sections at +4°C.



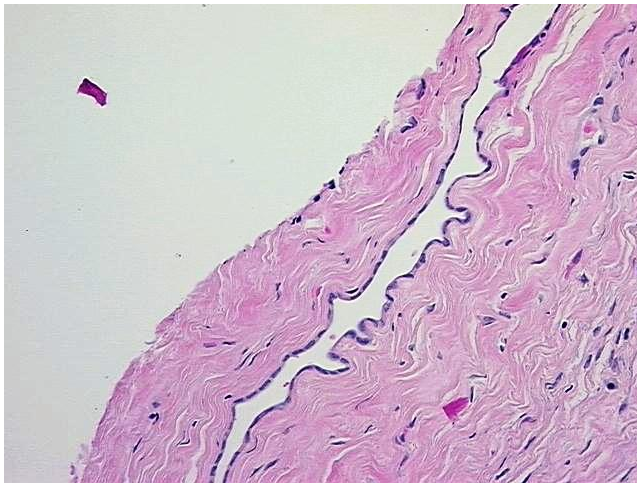
[View online »](#)

Stability: All FFPE tissue sections are stable for 1 year from date of purchase.

**Product images:**



4x Image



20x Image