

Product datasheet for **CS701004**

Tissue FFPE Sections, Lung

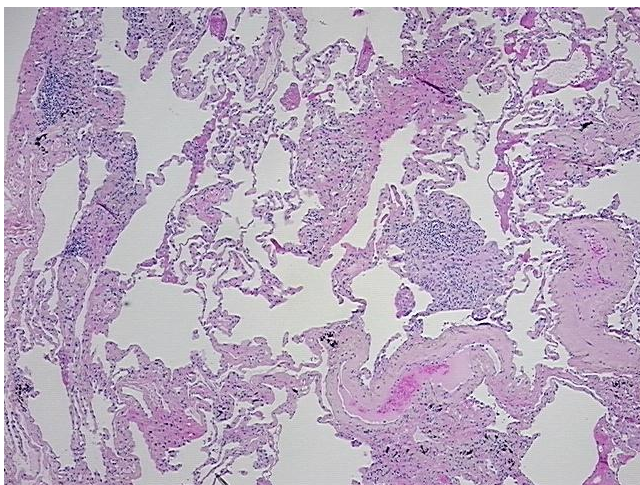
Product data:

Product Type:	FFPE Sections
Disease State:	Other Disease
Diagnosis Category:	Chronic Obstructive Pulmonary Disease (COPD)
Tissue:	Lung
Frozen Sample ID:	PA00001D46
Case ID:	CI0000000423
Tissue of Origin:	Lung
Site of Finding:	Lung
Appearance:	L
Sample Diagnosis (from Pathology Verification):	Emphysema
Normal:	20%
Lesional:	80%
Tumor:	0%
Tumor Hypo/Acellular Stroma:	0%
Tumor Hypercellular Stroma:	0%
Necrosis:	0%
Pathology Verification notes from H&E review:	80% peripheral lung with emphysema: 55% alveoli, 5% bronchioles, 20% fibrovascular septae with focal mild chronic inflammation
CASE Diagnosis (from medical center path report):	Carcinoma of kidney, renal cell, clear cell, metastatic
Age:	77
Gender:	Male
Race:	Not reported

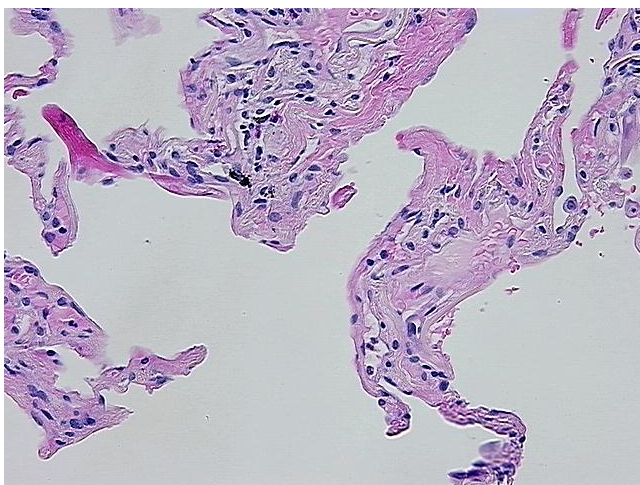


[View online »](#)

Tumor Grade:	Fuhrman G2: Nuclei slightly irregular
Minimum Stage Grouping:	IV
T (Extent of Primary Tumor):	TX
N (Lymph node metastasis):	NX
M (Distant metastasis):	M1
Storage:	Store FFPE tissue sections at +4°C.
Stability:	All FFPE tissue sections are stable for 1 year from date of purchase.

Product images:

4x Image



20x Image