

Product datasheet for **CS700825**

Tissue FFPE Sections, Stomach

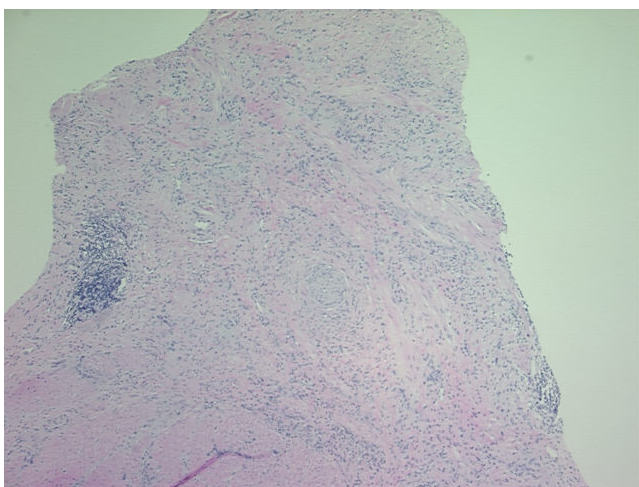
Product data:

| | |
|---|---|
| Product Type: | FFPE Sections |
| Disease State: | Cancer |
| Diagnosis Category: | Stomach Cancer |
| Tissue: | Stomach |
| Frozen Sample ID: | PA000019FA |
| Case ID: | CI0000000343 |
| Tissue of Origin: | Stomach |
| Site of Finding: | Stomach |
| Appearance: | T |
| Sample Diagnosis (from Pathology Verification): | Adenocarcinoma of stomach, signet ring cell |
| Normal: | 0% |
| Lesional: | 95% |
| Tumor: | 5% |
| Tumor Hypo/Acellular Stroma: | 0% |
| Tumor Hypercellular Stroma: | 0% |
| Necrosis: | 0% |
| Pathology Verification notes from H&E review: | Normal component consists of 95% muscle with admixed chronic inflammation; Keratin staining needed to confirm presence of tumor cells |
| CASE Diagnosis (from medical center path report): | Adenocarcinoma of stomach, signet ring cell |
| Age: | 51 |
| Gender: | Male |
| Race: | Black or African American |

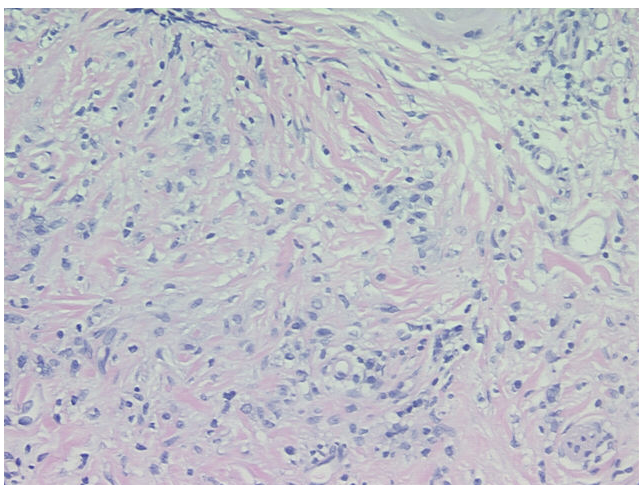


[View online »](#)

| | |
|------------------------------|---|
| Tumor Grade: | AJCC G3: Poorly differentiated |
| Minimum Stage Grouping: | IB |
| T (Extent of Primary Tumor): | T2 |
| N (Lymph node metastasis): | N0 |
| M (Distant metastasis): | MX |
| Storage: | Store FFPE tissue sections at +4°C. |
| Stability: | All FFPE tissue sections are stable for 1 year from date of purchase. |

Product images:

4x Image



20x Image