

Product datasheet for **CS700729**

Tissue FFPE Sections, Smooth muscle

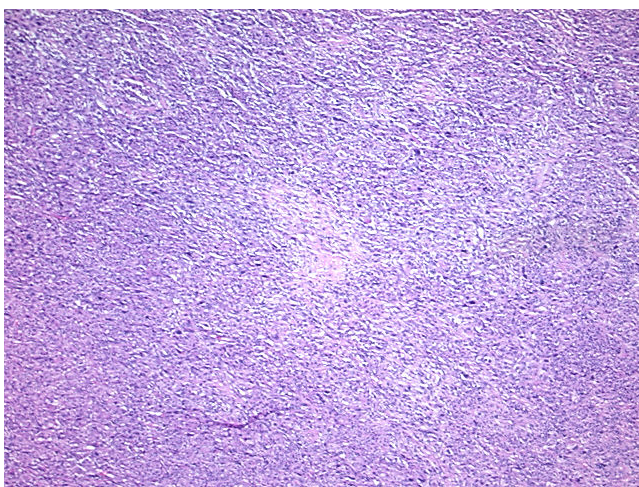
Product data:

| | |
|---|---|
| Product Type: | FFPE Sections |
| Disease State: | Cancer |
| Diagnosis Category: | Sarcoma |
| Tissue: | Muscle |
| Frozen Sample ID: | PA154763F6 |
| Case ID: | CI0000000306 |
| Tissue of Origin: | Smooth muscle |
| Site of Finding: | Pelvis |
| Appearance: | T |
| Sample Diagnosis (from Pathology Verification): | Leiomyosarcoma |
| Normal: | 0% |
| Lesional: | 0% |
| Tumor: | 95% |
| Tumor Hypo/Acellular Stroma: | 5% |
| Tumor Hypercellular Stroma: | 0% |
| Necrosis: | 0% |
| Pathology Verification notes from H&E review: | High grade leiomyosarcoma involving pelvis and multiple abdominal sites |
| CASE Diagnosis (from medical center path report): | Leiomyosarcoma |
| Age: | 42 |
| Gender: | Female |
| Race: | White or Caucasian |

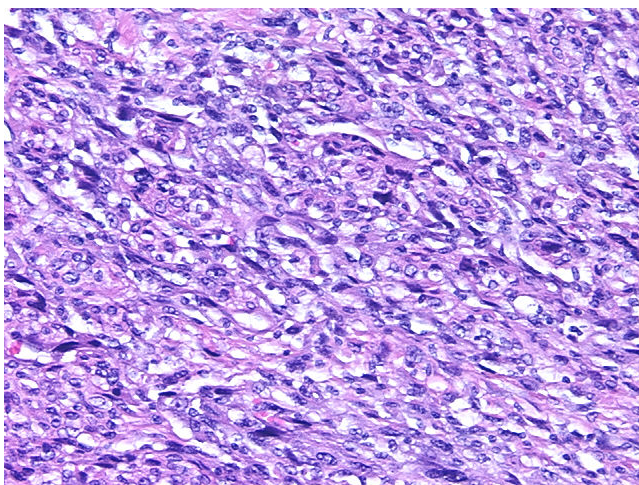


[View online »](#)

| | |
|------------------------------|---|
| Tumor Grade: | AJCC G3: Poorly differentiated |
| Minimum Stage Grouping: | Not Reported |
| T (Extent of Primary Tumor): | Not Reported |
| N (Lymph node metastasis): | Not Reported |
| M (Distant metastasis): | Not Reported |
| Storage: | Store FFPE tissue sections at +4°C. |
| Stability: | All FFPE tissue sections are stable for 1 year from date of purchase. |

Product images:

4x Image



20x Image