

## Product datasheet for **CS700489**

### Tissue FFPE Sections, Endometrium

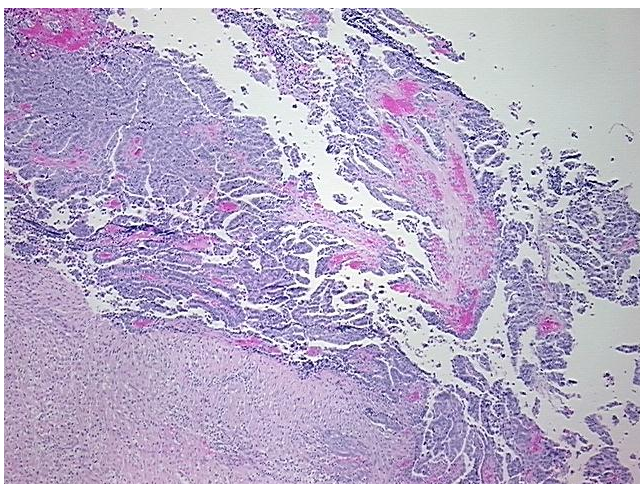
#### Product data:

Product Type:	FFPE Sections
Disease State:	Cancer
Diagnosis Category:	Sarcoma
Tissue:	Endometrium
Frozen Sample ID:	PA154776A9
Case ID:	CI0000000205
Tissue of Origin:	Endometrium
Site of Finding:	Endometrium
Appearance:	T
Sample Diagnosis (from Pathology Verification):	Carcinosarcoma of endometrium
Normal:	0%
Lesional:	0%
Tumor:	80%
Tumor Hypo/Acellular Stroma:	0%
Tumor Hypercellular Stroma:	10%
Necrosis:	10%
CASE Diagnosis (from medical center path report):	Carcinosarcoma of endometrium
Age:	71
Gender:	Female
Race:	Black or African American
Tumor Grade:	FIGO G3: Poorly differentiated

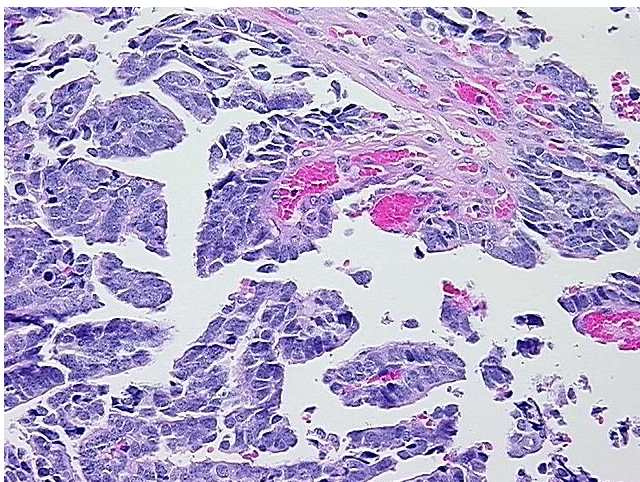


[View online »](#)

Minimum Stage Grouping:	IIIA
T (Extent of Primary Tumor):	T3a
N (Lymph node metastasis):	NX
M (Distant metastasis):	MX
Diagnostic Test Results:	Proliferation index ~ PI, Moderate; Progesterone receptor ~ PR ! by IHC, Positive; Estrogen receptor ~ ER ! by IHC, Positive
Storage:	Store FFPE tissue sections at +4°C.
Stability:	All FFPE tissue sections are stable for 1 year from date of purchase.

**Product images:**

4x Image



20x Image