

## Product datasheet for **CS700475**

### Tissue FFPE Sections, Neural tissue

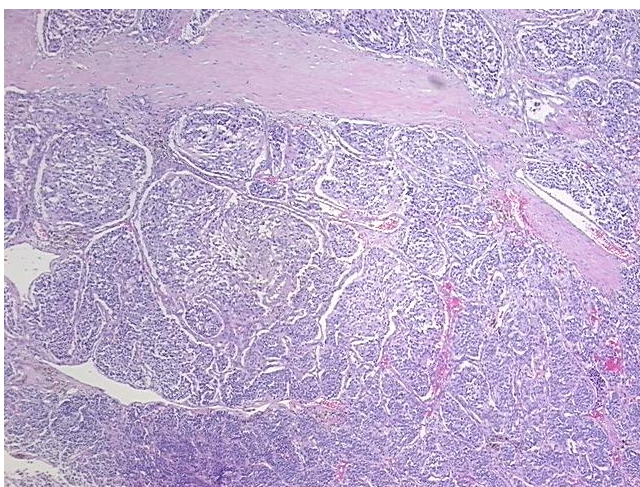
#### Product data:

Product Type:	FFPE Sections
Disease State:	Cancer
Diagnosis Category:	Carcinoid/Neuroendocrine Tumors
Tissue:	Nerve
Frozen Sample ID:	PA15477D55
Case ID:	CI0000000201
Tissue of Origin:	Neural tissue
Site of Finding:	Mediastinum
Appearance:	T
Sample Diagnosis (from Pathology Verification):	Paranglioma of mediastinum
Normal:	0%
Lesional:	0%
Tumor:	85%
Tumor Hypo/Acellular Stroma:	10%
Tumor Hypercellular Stroma:	5%
Necrosis:	0%
Pathology Verification notes from H&E review:	Tumor Stroma (Hypo/Acellular): hyalinization
CASE Diagnosis (from medical center path report):	Paranglioma of mediastinum
Age:	58
Gender:	Female
Race:	White or Caucasian

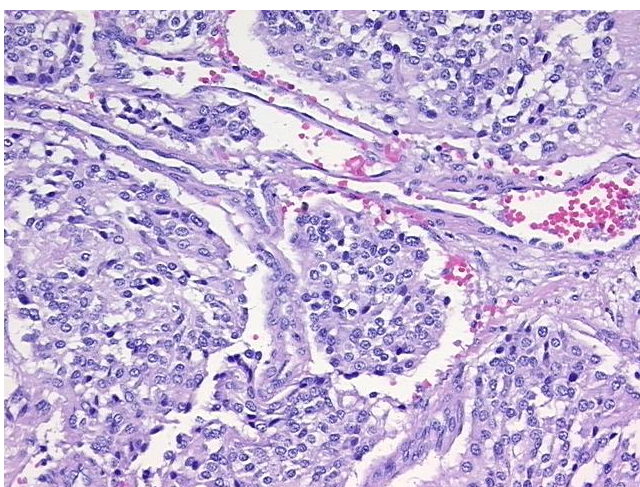


[View online »](#)

Tumor Grade:	Not Reported
Minimum Stage Grouping:	Not Reported
T (Extent of Primary Tumor):	Not Reported
N (Lymph node metastasis):	Not Reported
M (Distant metastasis):	Not Reported
Storage:	Store FFPE tissue sections at +4°C.
Stability:	All FFPE tissue sections are stable for 1 year from date of purchase.

**Product images:**

4x Image



20x Image