

## Product datasheet for **CS700374**

### Tissue FFPE Sections, Myometrium

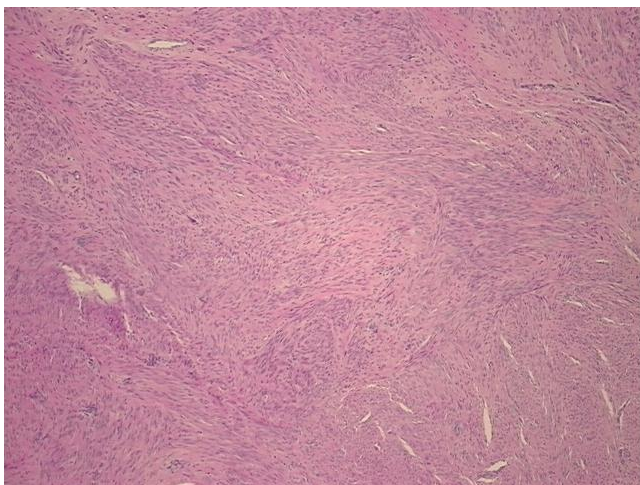
#### Product data:

Product Type:	FFPE Sections
Disease State:	Other Disease
Diagnosis Category:	Uterine Fibroids
Tissue:	Myometrium
Frozen Sample ID:	PA15478995
Case ID:	CI0000000139
Tissue of Origin:	Myometrium
Site of Finding:	Myometrium
Appearance:	T
Sample Diagnosis (from Pathology Verification):	Leiomyoma of myometrium
Normal:	2%
Lesional:	0%
Tumor:	98%
Tumor Hypo/Acellular Stroma:	0%
Tumor Hypercellular Stroma:	0%
Necrosis:	0%
CASE Diagnosis (from medical center path report):	Leiomyoma of myometrium
Age:	49
Gender:	Female
Race:	Not reported
Tumor Grade:	Not Reported

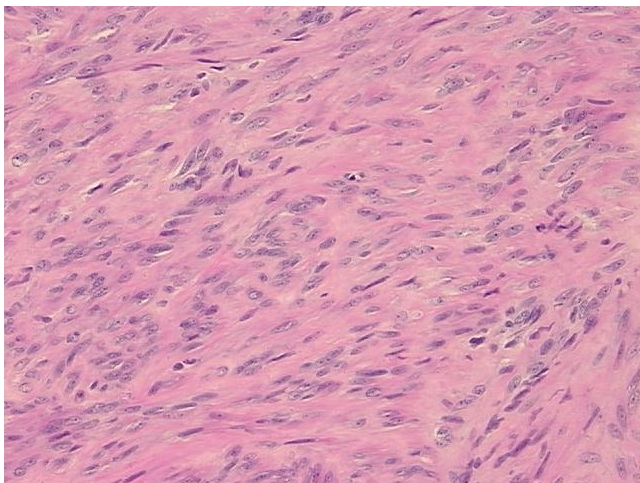


[View online »](#)

Minimum Stage Grouping:	Not Reported
T (Extent of Primary Tumor):	Not Reported
N (Lymph node metastasis):	Not Reported
M (Distant metastasis):	Not Reported
Storage:	Store FFPE tissue sections at +4°C.
Stability:	All FFPE tissue sections are stable for 1 year from date of purchase.

**Product images:**

4x Image



20x Image