

Product datasheet for **CS700160**

Tissue FFPE Sections, Endometrium

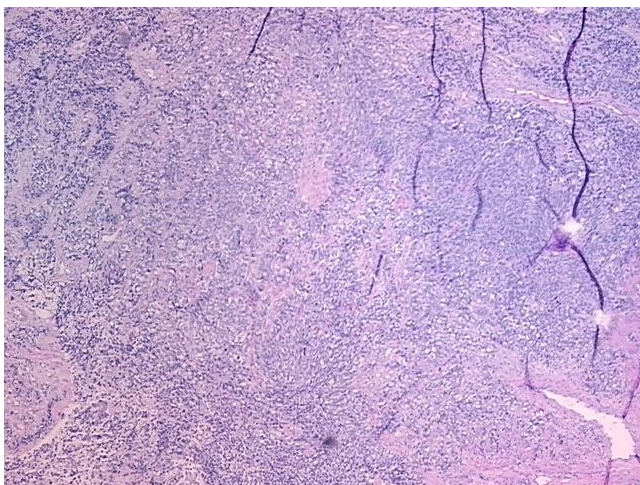
Product data:

Product Type:	FFPE Sections
Disease State:	Cancer
Diagnosis Category:	Endometrial Cancer
Tissue:	Endometrium
Frozen Sample ID:	PA00001EA6
Case ID:	CI0000000066
Tissue of Origin:	Endometrium
Site of Finding:	Uterus
Appearance:	T
Sample Diagnosis (from Pathology Verification):	Adenocarcinoma of endometrium, endometrioid
Normal:	5%
Lesional:	0%
Tumor:	85%
Tumor Hypo/Acellular Stroma:	0%
Tumor Hypercellular Stroma:	10%
Necrosis:	0%
Pathology Verification notes from H&E review:	tumor stroma: 100% desmoplasia
CASE Diagnosis (from medical center path report):	Adenocarcinoma of endometrium, endometrioid
Age:	62
Gender:	Female
Race:	Black or African American

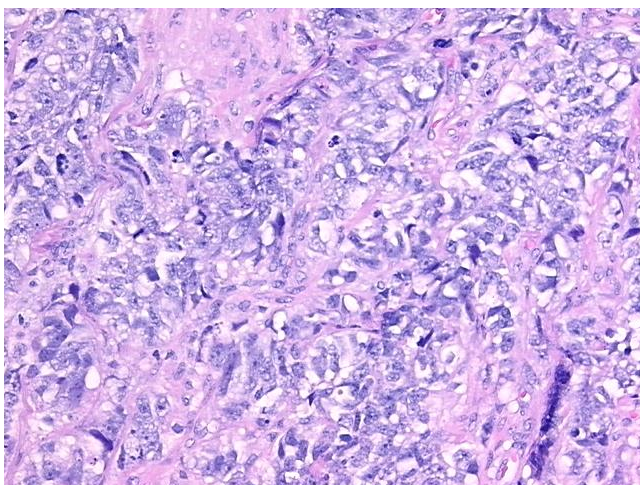


[View online »](#)

Tumor Grade:	FIGO G3: Poorly differentiated
Minimum Stage Grouping:	IIB
T (Extent of Primary Tumor):	T2b
N (Lymph node metastasis):	N0
M (Distant metastasis):	MX
Storage:	Store FFPE tissue sections at +4°C.
Stability:	All FFPE tissue sections are stable for 1 year from date of purchase.

Product images:

4x Image



20x Image