

Product datasheet for **CS700088**

Tissue FFPE Sections, Myometrium

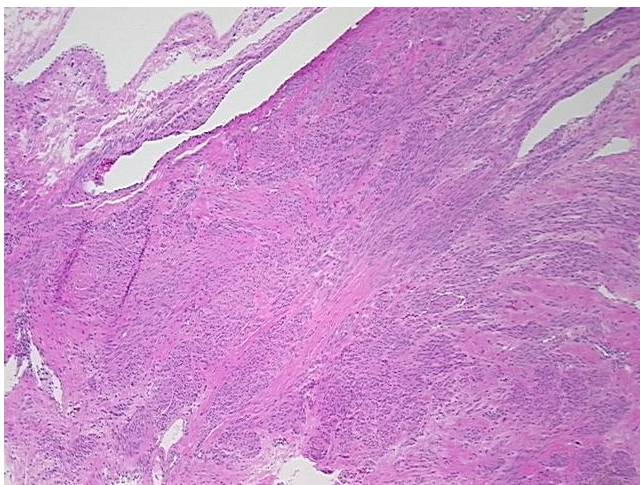
Product data:

| | |
|---|-------------------------|
| Product Type: | FFPE Sections |
| Disease State: | Other Disease |
| Diagnosis Category: | Uterine Fibroids |
| Tissue: | Myometrium |
| Frozen Sample ID: | PA1547898C |
| Case ID: | CI0000000042 |
| Tissue of Origin: | Myometrium |
| Site of Finding: | Myometrium |
| Appearance: | T |
| Sample Diagnosis (from Pathology Verification): | Leiomyoma of myometrium |
| Normal: | 0% |
| Lesional: | 0% |
| Tumor: | 70% |
| Tumor Hypo/Acellular Stroma: | 0% |
| Tumor Hypercellular Stroma: | 30% |
| Necrosis: | 0% |
| CASE Diagnosis (from medical center path report): | Leiomyoma of myometrium |
| Age: | 59 |
| Gender: | Female |
| Race: | White or Caucasian |
| Tumor Grade: | Not Reported |

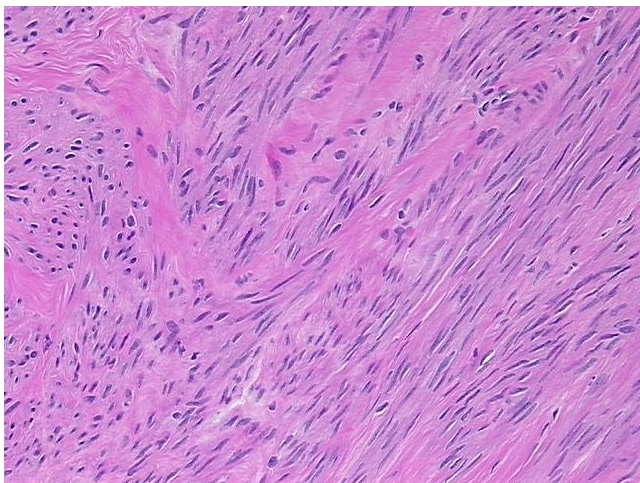


[View online »](#)

| | |
|------------------------------|---|
| Minimum Stage Grouping: | Not Reported |
| T (Extent of Primary Tumor): | Not Reported |
| N (Lymph node metastasis): | Not Reported |
| M (Distant metastasis): | Not Reported |
| Storage: | Store FFPE tissue sections at +4°C. |
| Stability: | All FFPE tissue sections are stable for 1 year from date of purchase. |

Product images:

4x Image



20x Image