

## Product datasheet for **CS700023**

### Tissue FFPE Sections, Lung

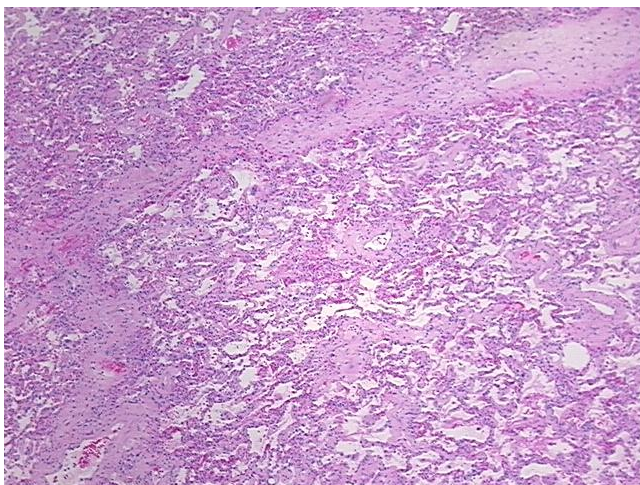
#### Product data:

Product Type:	FFPE Sections
Disease State:	Other Disease
Diagnosis Category:	Treatment Effect
Tissue:	Lung
Frozen Sample ID:	PA1547693B
Case ID:	CI0000000011
Tissue of Origin:	Lung
Site of Finding:	Lung
Appearance:	L
Sample Diagnosis (from Pathology Verification):	Radiation effect
Normal:	0%
Lesional:	100%
Tumor:	0%
Tumor Hypo/Acellular Stroma:	0%
Tumor Hypercellular Stroma:	0%
Necrosis:	0%
Pathology Verification notes from H&E review:	78% alveoli, 2% bronchi, 20% fibrovascular septa; 2+ IAM, 2+ LY, 0+ PMN; interstitial fibrosis, cellular atypia and vascular changes consistent with radiation effect
CASE Diagnosis (from medical center path report):	Carcinoma of lung, squamous cell
Age:	58
Gender:	Male
Race:	White or Caucasian

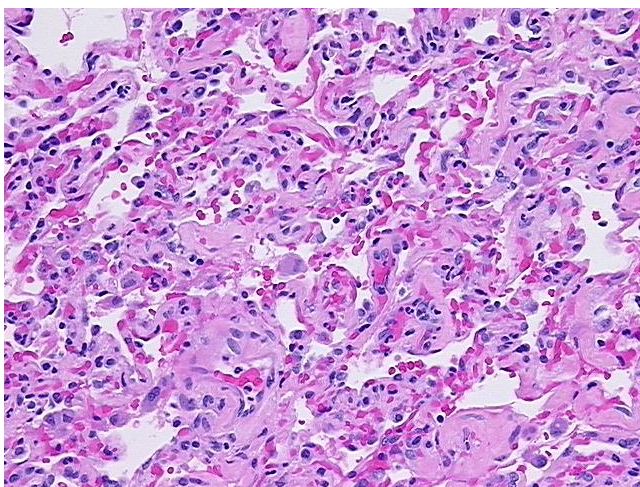


[View online »](#)

Tumor Grade:	AJCC G3: Poorly differentiated
Minimum Stage Grouping:	IIA
T (Extent of Primary Tumor):	T1
N (Lymph node metastasis):	N1
M (Distant metastasis):	MX
Storage:	Store FFPE tissue sections at +4°C.
Stability:	All FFPE tissue sections are stable for 1 year from date of purchase.

**Product images:**

4x Image



20x Image