

## Product datasheet for **CS651636**

### Frozen Tissue Sections, Breast, right medial

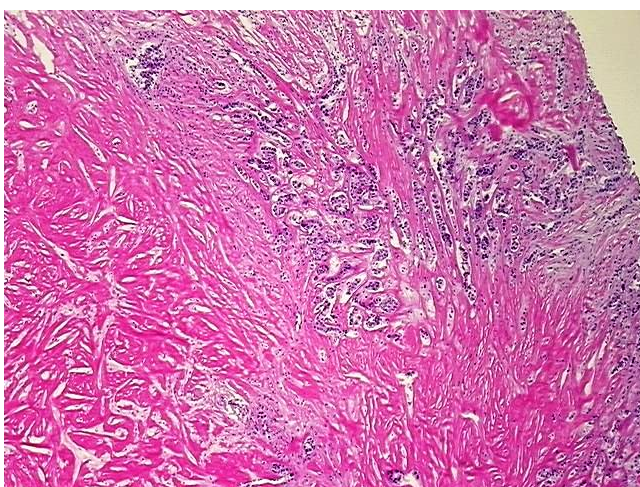
#### Product data:

Product Type:	Frozen Sections
Disease State:	Cancer
Diagnosis Category:	Breast Cancer
Tissue:	Breast
Frozen Sample ID:	FR0004508F
Case ID:	CU0000018806
Tissue of Origin:	Breast, right medial
Site of Finding:	Breast, right medial
Appearance:	Tumor
Sample Diagnosis (from Pathology Verification):	Adenocarcinoma of breast, ductal
Normal:	5%
Lesional:	0%
Tumor:	15%
Tumor Hypo/Acellular Stroma:	0%
Tumor Hypercellular Stroma:	80%
Necrosis:	0%
Pathology Verification notes from H&E review:	Tumor Stroma (Cellular): hyalinized stroma
CASE Diagnosis (from medical center path report):	Adenocarcinoma of breast, ductal
Age:	59
Gender:	Female
Tumor Grade:	Nottingham G3: 8-9 points High combined grade (unfavorable)

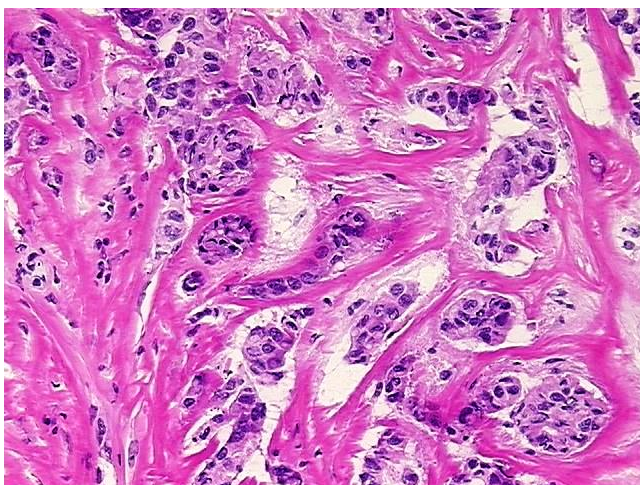


[View online »](#)

Minimum Stage Grouping:	IIA
T (Extent of Primary Tumor):	pT2
N (Lymph node metastasis):	pN0 (i-)
M (Distant metastasis):	pMX
Storage:	Store frozen tissue sections at -80°C.
Stability:	All frozen tissue sections are stable for 1 year from date of purchase if stored at -80°C without repeated freeze/thaws.

**Product images:**

4x Image



20x Image