

## Product datasheet for **CS651164**

### Frozen Tissue Sections, Colon

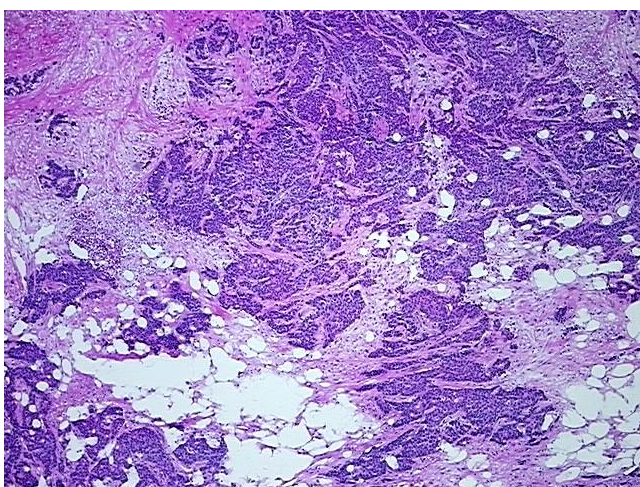
#### Product data:

Product Type:	Frozen Sections
Disease State:	Cancer
Diagnosis Category:	Colorectal Cancer
Tissue:	Colon
Frozen Sample ID:	FR5B34767C
Case ID:	CU0000018758
Tissue of Origin:	Colon
Site of Finding:	Colon
Appearance:	Tumor
Sample Diagnosis (from Pathology Verification):	Adenocarcinoma of colon
Normal:	0%
Lesional:	0%
Tumor:	40%
Tumor Hypo/Acellular Stroma:	10%
Tumor Hypercellular Stroma:	30%
Necrosis:	20%
Pathology Verification notes from H&E review:	Tumor Stroma (Cellular): Desmoplastic reaction; Tumor Stroma (Hypo/Acellular): Adipose tissue; Other Features/Comments: Tumor area: 6 mm x 4 mm
CASE Diagnosis (from medical center path report):	Adenocarcinoma of colon
Age:	84
Gender:	Male
Tumor Grade:	AJCC G1: Well differentiated

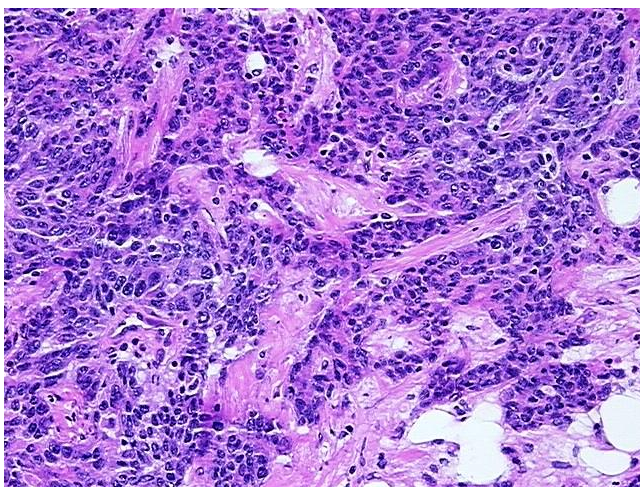


[View online »](#)

Minimum Stage Grouping:	IIB
T (Extent of Primary Tumor):	pT4
N (Lymph node metastasis):	pN0
M (Distant metastasis):	pMX
Storage:	Store frozen tissue sections at -80°C.
Stability:	All frozen tissue sections are stable for 1 year from date of purchase if stored at -80°C without repeated freeze/thaws.

**Product images:**

4x Image



20x Image