

Product datasheet for **CS651105**

Frozen Tissue Sections, Ileum

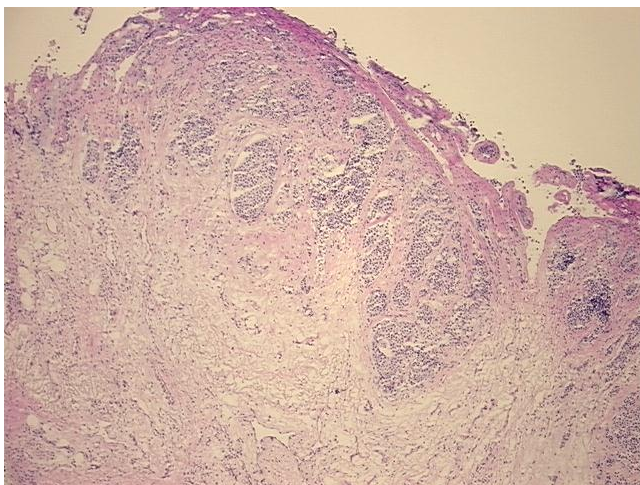
Product data:

Product Type:	Frozen Sections
Disease State:	Cancer
Diagnosis Category:	Carcinoid/Neuroendocrine Tumors
Tissue:	Small intestine
Frozen Sample ID:	FR5B34760D
Case ID:	CU0000018753
Tissue of Origin:	Ileum
Site of Finding:	Mesentery
Appearance:	T
Sample Diagnosis (from Pathology Verification):	Tumor of ileum, carcinoid, metastatic
Normal:	75%
Lesional:	0%
Tumor:	25%
Tumor Hypo/Acellular Stroma:	0%
Tumor Hypercellular Stroma:	0%
Necrosis:	0%
Pathology Verification notes from H&E review:	Non Tumor Structures: 40% Fibroadipose tissue, 50% Lymph nodes, 10% Neurovascular tissue
CASE Diagnosis (from medical center path report):	Tumor of ileum, carcinoid
Age:	54
Gender:	Female
Tumor Grade:	Not Reported

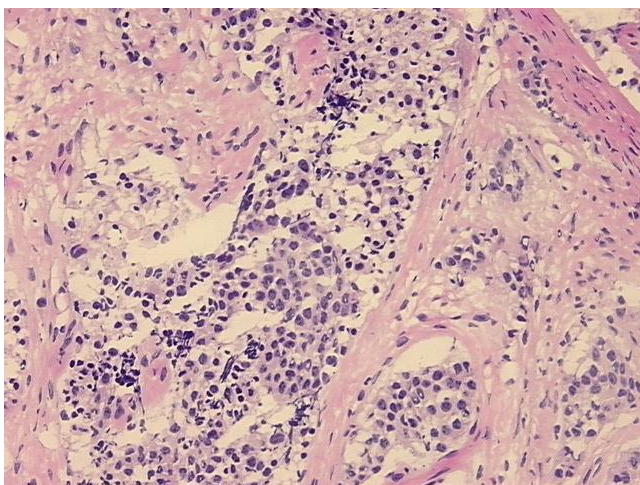


[View online »](#)

Minimum Stage Grouping:	Not Reported
T (Extent of Primary Tumor):	Not Reported
N (Lymph node metastasis):	Not Reported
M (Distant metastasis):	Not Reported
Diagnostic Test Results:	Synaptophysin ~ SYN ! by IHC,Positive; Chromogranin A ~ Parathyroid secretory protein 1 ! by IHC,Positive; Cytokeratin AE3 ~ AE3 ! by IHC,Positive
Storage:	Store frozen tissue sections at -80°C.
Stability:	All frozen tissue sections are stable for 1 year from date of purchase if stored at -80°C without repeated freeze/thaws.

Product images:

4x Image



20x Image