

Product datasheet for **CS650499**

Frozen Tissue Sections, Stomach

Product data:

Product Type:	Frozen Sections
Disease State:	Cancer
Diagnosis Category:	Stomach Cancer
Tissue:	Stomach
Frozen Sample ID:	FR5B3452C6
Case ID:	CU0000016299
Tissue of Origin:	Stomach
Site of Finding:	Stomach
Appearance:	T
Sample Diagnosis (from Pathology Verification):	Adenocarcinoma of stomach, signet ring cell
Normal:	50%
Lesional:	0%
Tumor:	30%
Tumor Hypo/Acellular Stroma:	0%
Tumor Hypercellular Stroma:	20%
Necrosis:	0%
Pathology Verification notes from H&E review:	Tumor Stroma (Cellular): Desmoplastic reaction, Inflammatory cells; Non Tumor Structures: 100% Muscle; Other Features/Comments: Sample area: 7 mm x 6 mm
CASE Diagnosis (from medical center path report):	Adenocarcinoma of stomach, signet ring cell
Age:	62
Gender:	Female
Tumor Grade:	AJCC G3: Poorly differentiated



[View online »](#)

Minimum Stage Grouping: IV

T (Extent of Primary Tumor): T4

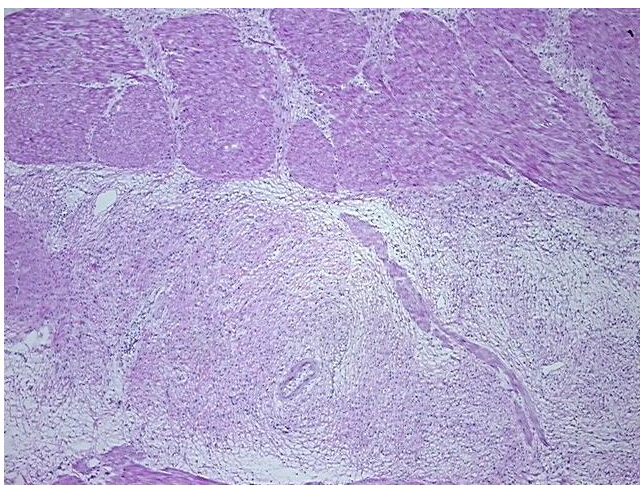
N (Lymph node metastasis): N2

M (Distant metastasis): M1

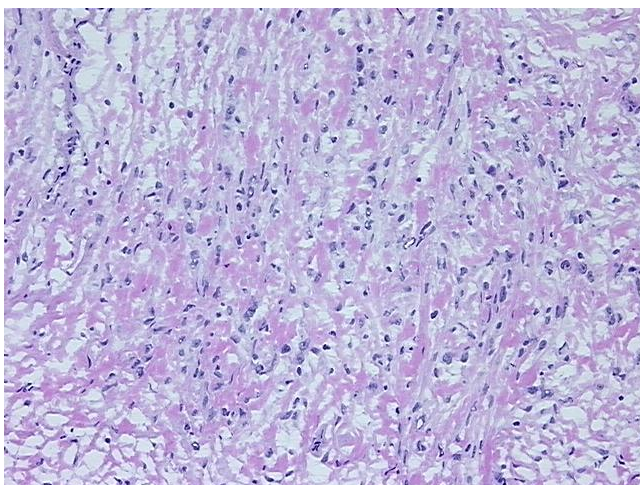
Storage: Store frozen tissue sections at -80°C.

Stability: All frozen tissue sections are stable for 1 year from date of purchase if stored at -80°C without repeated freeze/thaws.

Product images:



4x Image



20x Image