

Product datasheet for **CS649535**

Frozen Tissue Sections, Colon

Product data:

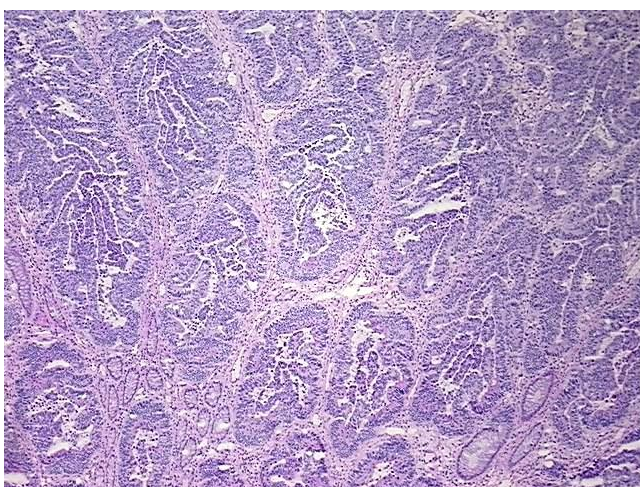
Product Type:	Frozen Sections
Disease State:	Cancer
Diagnosis Category:	Colorectal Cancer
Tissue:	Colon
Frozen Sample ID:	FR00041688
Case ID:	CU0000016192
Tissue of Origin:	Colon
Site of Finding:	Colon
Appearance:	Tumor
Sample Diagnosis (from Pathology Verification):	Adenocarcinoma of colon
Normal:	65%
Lesional:	0%
Tumor:	30%
Tumor Hypo/Acellular Stroma:	0%
Tumor Hypercellular Stroma:	5%
Necrosis:	0%
Pathology Verification notes from H&E review:	Tumor Stroma (Cellular): Desmoplastic reaction; Inflammation: Mild Mixed inflammatory infiltrate; Non Tumor Structures: 100% Mucosa
CASE Diagnosis (from medical center path report):	Adenocarcinoma of colon
Age:	45
Gender:	Male
Tumor Grade:	AJCC G1: Well differentiated



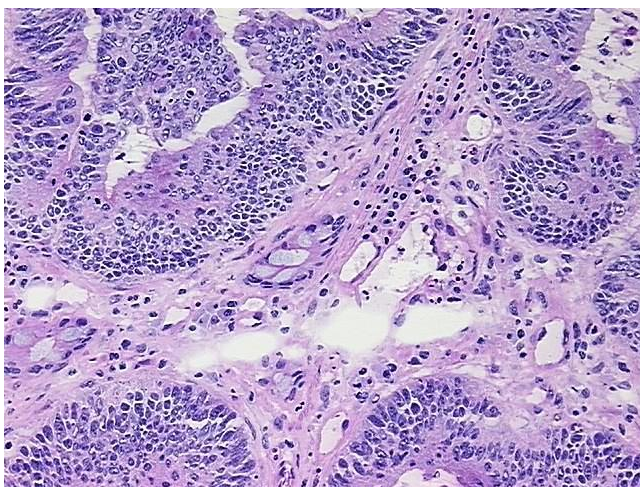
[View online »](#)

Minimum Stage Grouping:	IIIC
T (Extent of Primary Tumor):	pT3
N (Lymph node metastasis):	pN2
M (Distant metastasis):	pMX
Storage:	Store frozen tissue sections at -80°C.
Stability:	All frozen tissue sections are stable for 1 year from date of purchase if stored at -80°C without repeated freeze/thaws.

Product images:



4x Image



20x Image