

Product datasheet for **CS649344**

Frozen Tissue Sections, Bone: femur, medial

Product data:

Product Type:	Frozen Sections
Disease State:	Cancer
Diagnosis Category:	Sarcoma
Tissue:	Bone
Frozen Sample ID:	FR0003F026
Case ID:	CU0000016169
Tissue of Origin:	Bone: femur, medial
Site of Finding:	Thigh
Appearance:	Tumor
Sample Diagnosis (from Pathology Verification):	Osteosarcoma
Normal:	0%
Lesional:	0%
Tumor:	20%
Tumor Hypo/Acellular Stroma:	0%
Tumor Hypercellular Stroma:	10%
Necrosis:	70%
CASE Diagnosis (from medical center path report):	Osteosarcoma
Age:	37
Gender:	Male
Tumor Grade:	AJCC G3-4: Poorly differentiated or undifferentiated
Minimum Stage Grouping:	IIA



[View online »](#)

T (Extent of Primary Tumor): pT1

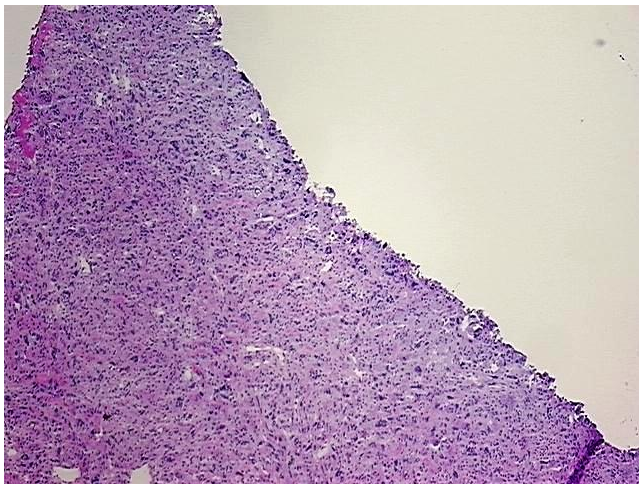
N (Lymph node metastasis): pNX

M (Distant metastasis): pMX

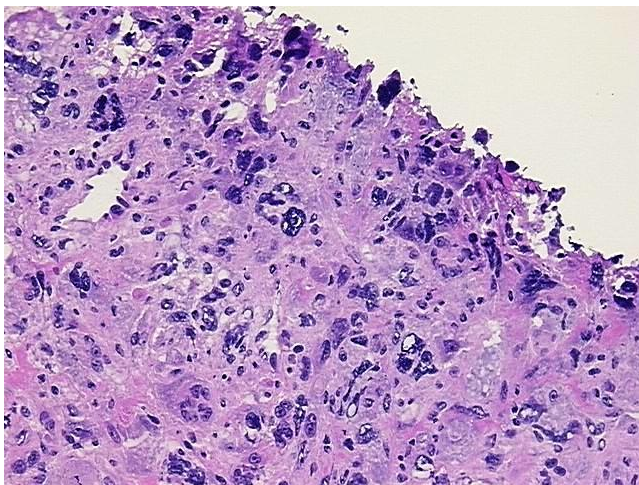
Storage: Store frozen tissue sections at -80°C.

Stability: All frozen tissue sections are stable for 1 year from date of purchase if stored at -80°C without repeated freeze/thaws.

Product images:



4x Image



20x Image