

Product datasheet for **CS648742**

Frozen Tissue Sections, Colon: right

Product data:

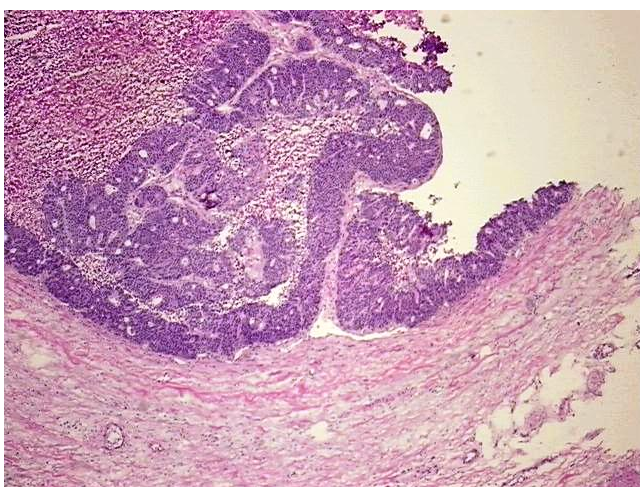
Product Type:	Frozen Sections
Disease State:	Cancer
Diagnosis Category:	Colorectal Cancer
Tissue:	Colon
Frozen Sample ID:	FR5B346E1E
Case ID:	CU0000014847
Tissue of Origin:	Colon: right
Site of Finding:	Lymph node
Appearance:	Tumor
Sample Diagnosis (from Pathology Verification):	Adenocarcinoma of colon, metastatic
Normal:	10%
Lesional:	0%
Tumor:	15%
Tumor Hypo/Acellular Stroma:	40%
Tumor Hypercellular Stroma:	20%
Necrosis:	15%
Pathology Verification notes from H&E review:	Tumor Stroma (Hypo/Acellular): Myxoid
CASE Diagnosis (from medical center path report):	Adenocarcinoma of colon
Age:	63
Gender:	Female
Tumor Grade:	AJCC G1: Well differentiated



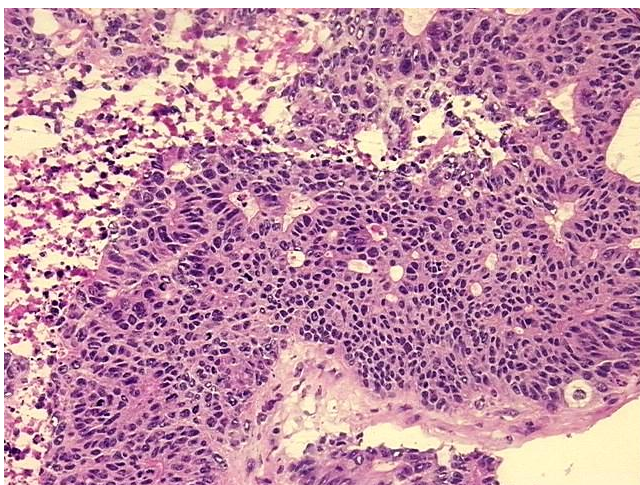
[View online »](#)

Minimum Stage Grouping:	IIIB
T (Extent of Primary Tumor):	pT3
N (Lymph node metastasis):	pN1
M (Distant metastasis):	pMX
Storage:	Store frozen tissue sections at -80°C.
Stability:	All frozen tissue sections are stable for 1 year from date of purchase if stored at -80°C without repeated freeze/thaws.

Product images:



4x Image



20x Image