

Product datasheet for **CS648715**

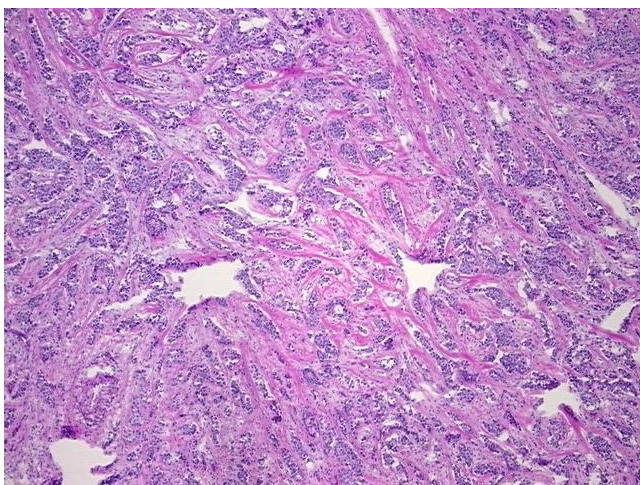
Frozen Tissue Sections, Breast

Product data:

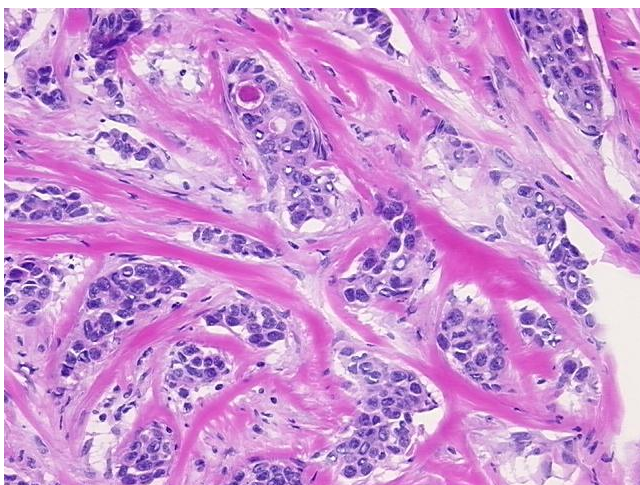
Product Type:	Frozen Sections
Disease State:	Cancer
Diagnosis Category:	Breast Cancer
Tissue:	Breast
Frozen Sample ID:	FR00042679
Case ID:	CU0000014845
Tissue of Origin:	Breast
Site of Finding:	Breast
Appearance:	T
Sample Diagnosis (from Pathology Verification):	Adenocarcinoma of breast, ductal
Normal:	0%
Lesional:	0%
Tumor:	75%
Tumor Hypo/Acellular Stroma:	10%
Tumor Hypercellular Stroma:	15%
Necrosis:	0%
CASE Diagnosis (from medical center path report):	Adenocarcinoma of breast, ductal
Age:	48
Gender:	Female
Tumor Grade:	Nottingham G2: 6-7 points Intermediate combined grade (moderately favorable)
Minimum Stage Grouping:	IIB


[View online »](#)

T (Extent of Primary Tumor):	T2
N (Lymph node metastasis):	N1a
M (Distant metastasis):	MX
Storage:	Store frozen tissue sections at -80°C.
Stability:	All frozen tissue sections are stable for 1 year from date of purchase if stored at -80°C without repeated freeze/thaws.

Product images:


4x Image



20x Image