

Product datasheet for **CS648533**

Frozen Tissue Sections, Breast

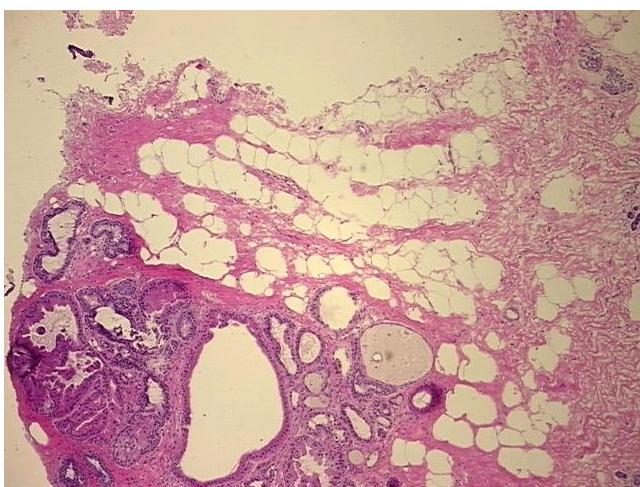
Product data:

| | |
|---|--|
| Product Type: | Frozen Sections |
| Disease State: | Other Disease |
| Diagnosis Category: | Fibrocystic Breast |
| Tissue: | Breast |
| Frozen Sample ID: | FR5B346B4B |
| Case ID: | CU0000014808 |
| Tissue of Origin: | Breast |
| Site of Finding: | Breast |
| Appearance: | L |
| Sample Diagnosis (from Pathology Verification): | Fibrocystic changes to breast |
| Normal: | 40% |
| Lesional: | 60% |
| Tumor: | 0% |
| Tumor Hypo/Acellular Stroma: | 0% |
| Tumor Hypercellular Stroma: | 0% |
| Necrosis: | 0% |
| Pathology Verification notes from H&E review: | Non Tumor Structures: 30% Glandular epithelium, 60% Stroma, 10% Adipose tissue |
| CASE Diagnosis (from medical center path report): | Adenocarcinoma of breast, lobular |
| Age: | 63 |
| Gender: | Female |
| Tumor Grade: | Nottingham G1: 3-5 points Low combined grade (favorable) |

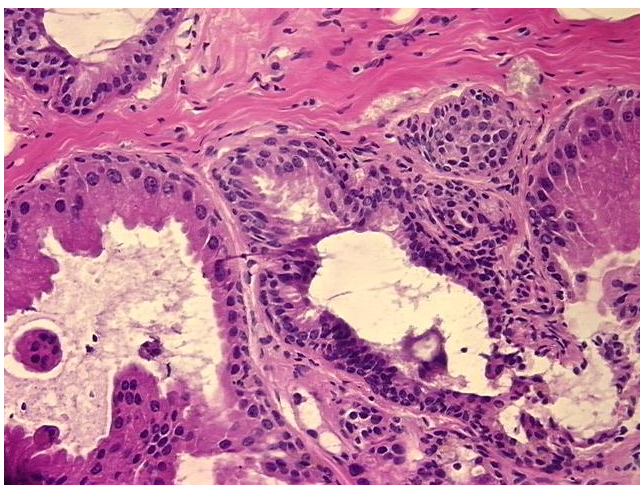


[View online »](#)

| | |
|------------------------------|--|
| Minimum Stage Grouping: | IIIA |
| T (Extent of Primary Tumor): | T3 |
| N (Lymph node metastasis): | N1a |
| M (Distant metastasis): | MX |
| Storage: | Store frozen tissue sections at -80°C. |
| Stability: | All frozen tissue sections are stable for 1 year from date of purchase if stored at -80°C without repeated freeze/thaws. |

Product images:

4x Image



20x Image