

## Product datasheet for CS648391

### Frozen Tissue Sections, Ileum

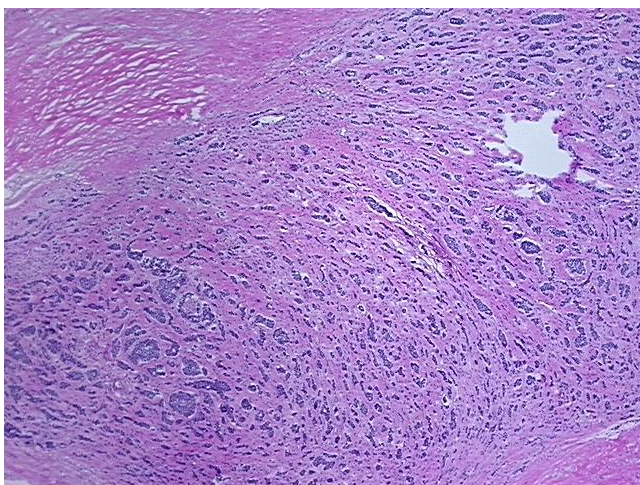
#### Product data:

Product Type:	Frozen Sections
Disease State:	Cancer
Diagnosis Category:	Carcinoid/Neuroendocrine Tumors
Tissue:	Small intestine
Frozen Sample ID:	FR65EE51FA
Case ID:	CU0000014790
Tissue of Origin:	Ileum
Site of Finding:	Ileum
Appearance:	T
Sample Diagnosis (from Pathology Verification):	Tumor of ileum, carcinoid
Normal:	30%
Lesional:	0%
Tumor:	55%
Tumor Hypo/Acellular Stroma:	15%
Tumor Hypercellular Stroma:	0%
Necrosis:	0%
CASE Diagnosis (from medical center path report):	Tumor of ileum, carcinoid
Age:	58
Gender:	Male
Tumor Grade:	Not Reported
Minimum Stage Grouping:	Not Reported

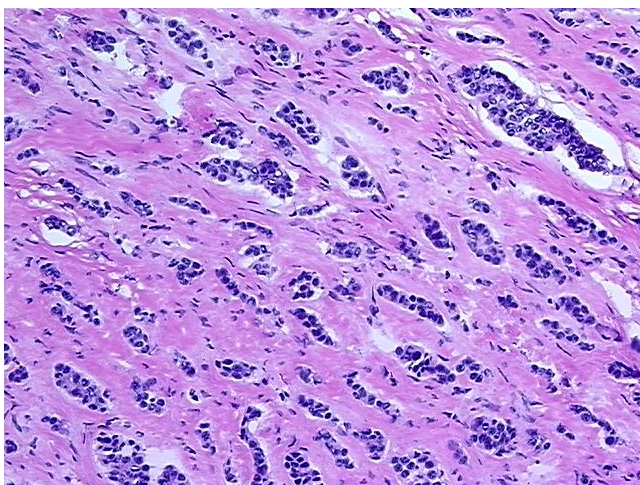


[View online »](#)

T (Extent of Primary Tumor):	Not Reported
N (Lymph node metastasis):	Not Reported
M (Distant metastasis):	Not Reported
Storage:	Store frozen tissue sections at -80°C.
Stability:	All frozen tissue sections are stable for 1 year from date of purchase if stored at -80°C without repeated freeze/thaws.

**Product images:**

4x Image



20x Image