

Product datasheet for **CS647875**

Frozen Tissue Sections, Colon: transverse

Product data:

Product Type:	Frozen Sections
Disease State:	Cancer
Diagnosis Category:	Colorectal Cancer
Tissue:	Colon
Frozen Sample ID:	FR5B344C32
Case ID:	CU0000014748
Tissue of Origin:	Colon: transverse
Site of Finding:	Colon: transverse
Appearance:	Tumor
Sample Diagnosis (from Pathology Verification):	Adenocarcinoma of colon
Normal:	20%
Lesional:	0%
Tumor:	30%
Tumor Hypo/Acellular Stroma:	0%
Tumor Hypercellular Stroma:	40%
Necrosis:	10%
CASE Diagnosis (from medical center path report):	Adenocarcinoma of colon
Age:	83
Gender:	Female
Tumor Grade:	AJCC G1: Well differentiated
Minimum Stage Grouping:	IIA



[View online »](#)

T (Extent of Primary Tumor): pT3

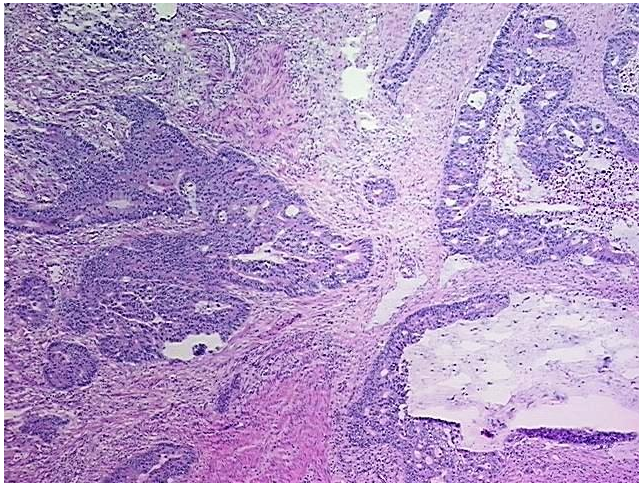
N (Lymph node metastasis): pN0

M (Distant metastasis): pMX

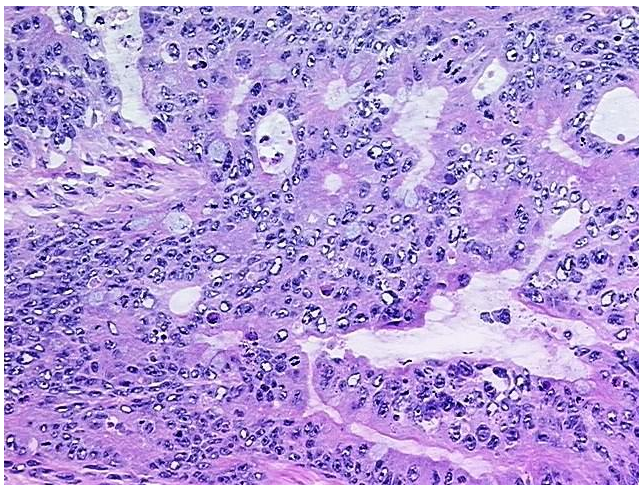
Storage: Store frozen tissue sections at -80°C.

Stability: All frozen tissue sections are stable for 1 year from date of purchase if stored at -80°C without repeated freeze/thaws.

Product images:



4x Image



20x Image