

Product datasheet for **CS647841**

Frozen Tissue Sections, Parotid gland

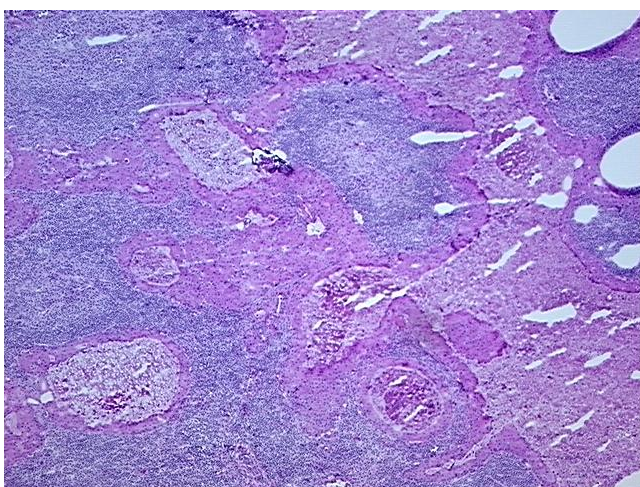
Product data:

Product Type:	Frozen Sections
Disease State:	Other Disease
Diagnosis Category:	Benign Tumors
Tissue:	Salivary gland
Frozen Sample ID:	FR5B344BA8
Case ID:	CU0000014745
Tissue of Origin:	Parotid gland
Site of Finding:	Parotid gland
Appearance:	T
Sample Diagnosis (from Pathology Verification):	Tumor of parotid gland, Warthins
Normal:	0%
Lesional:	0%
Tumor:	95%
Tumor Hypo/Acellular Stroma:	5%
Tumor Hypercellular Stroma:	0%
Necrosis:	0%
Pathology Verification notes from H&E review:	Tumor: 40% epithelium; 60% lymphoid stroma
CASE Diagnosis (from medical center path report):	Tumor of parotid gland, Warthins
Age:	78
Gender:	Male
Tumor Grade:	Not Reported

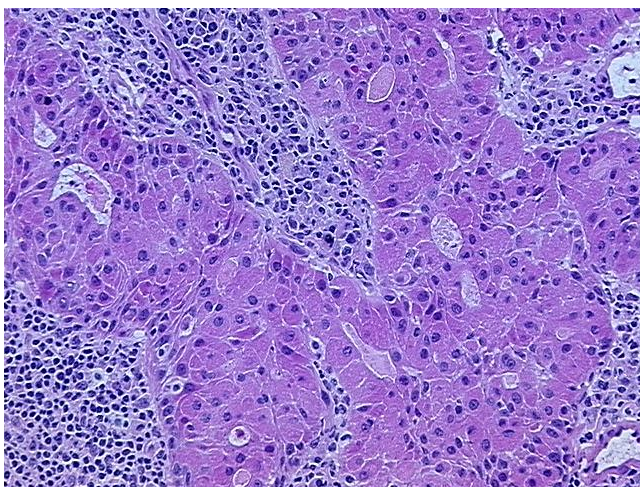


[View online »](#)

Minimum Stage Grouping:	Not Reported
T (Extent of Primary Tumor):	Not Reported
N (Lymph node metastasis):	Not Reported
M (Distant metastasis):	Not Reported
Storage:	Store frozen tissue sections at -80°C.
Stability:	All frozen tissue sections are stable for 1 year from date of purchase if stored at -80°C without repeated freeze/thaws.

Product images:

4x Image



20x Image