

## Product datasheet for **CS647801**

### Frozen Tissue Sections, Colon: rectosigmoid

#### Product data:

Product Type:	Frozen Sections
Disease State:	Other Disease
Diagnosis Category:	Polyps
Tissue:	Colon
Frozen Sample ID:	FR0003A1D9
Case ID:	CU0000014739
Tissue of Origin:	Colon: rectosigmoid
Site of Finding:	Colon: rectosigmoid
Appearance:	T
Sample Diagnosis (from Pathology Verification):	Polyp of colon, hyperplastic
Normal:	95%
Lesional:	0%
Tumor:	5%
Tumor Hypo/Acellular Stroma:	0%
Tumor Hypercellular Stroma:	0%
Necrosis:	0%
Pathology Verification notes from H&E review:	Non Tumor Structures: 80% Mucosa, 10% Submucosa, 10% Muscle
CASE Diagnosis (from medical center path report):	Adenocarcinoma of colon
Age:	63
Gender:	Male
Tumor Grade:	AJCC G1: Well differentiated



[View online »](#)

Minimum Stage Grouping: IIIC

T (Extent of Primary Tumor): T3

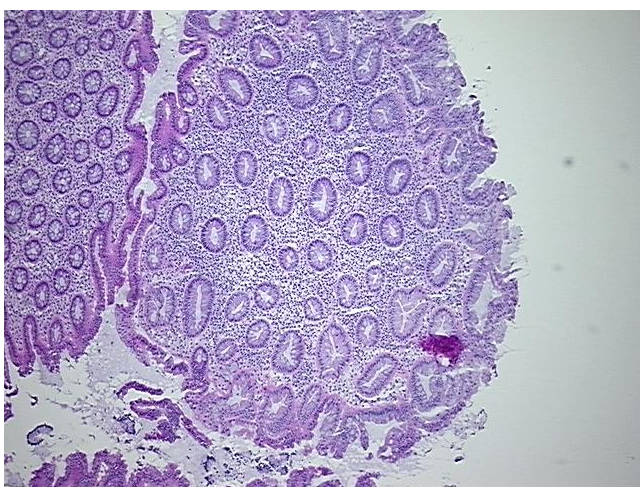
N (Lymph node metastasis): N2

M (Distant metastasis): MX

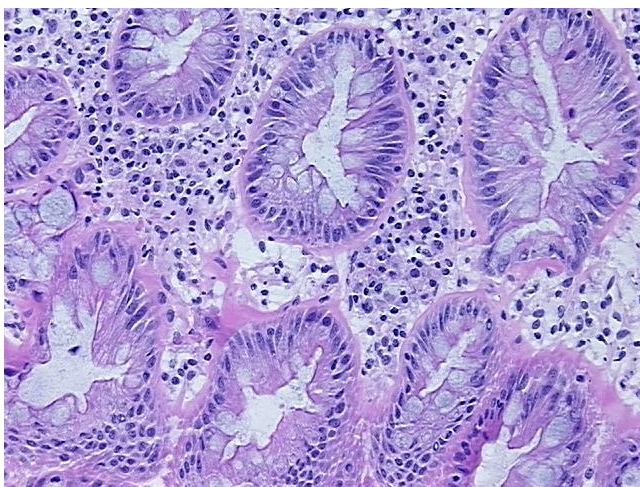
Storage: Store frozen tissue sections at -80°C.

Stability: All frozen tissue sections are stable for 1 year from date of purchase if stored at -80°C without repeated freeze/thaws.

### Product images:



4x Image



20x Image