

Product datasheet for **CS647736**

Frozen Tissue Sections, Lymphoid tissue

Product data:

Product Type:	Frozen Sections
Disease State:	Cancer
Diagnosis Category:	Lymphoma
Tissue:	Lymphoid tissue
Frozen Sample ID:	FR5B3449C4
Case ID:	CU0000014732
Tissue of Origin:	Lymphoid tissue
Site of Finding:	Ovary: left
Appearance:	Tumor
Sample Diagnosis (from Pathology Verification):	Lymphoma, large B-cell, diffuse
Normal:	0%
Lesional:	0%
Tumor:	20%
Tumor Hypo/Acellular Stroma:	0%
Tumor Hypercellular Stroma:	30%
Necrosis:	50%
CASE Diagnosis (from medical center path report):	Lymphoma, large B-cell, diffuse
Age:	38
Gender:	Female
Tumor Grade:	Not reported
Minimum Stage Grouping:	IIE

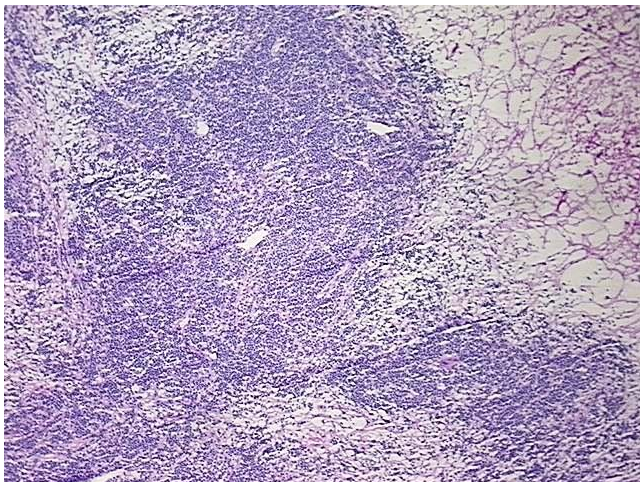


[View online »](#)

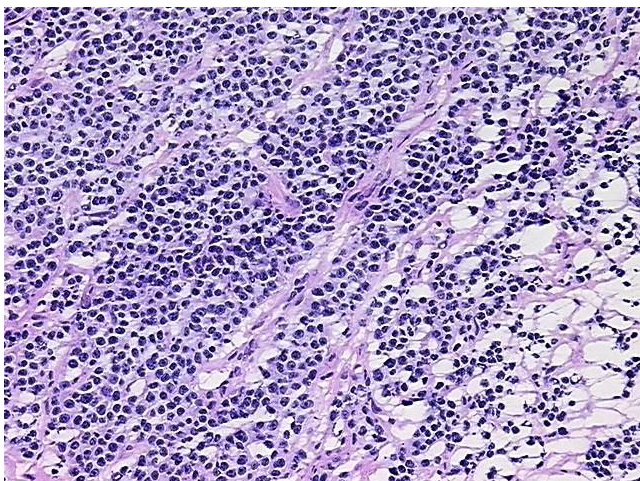
Storage: Store frozen tissue sections at -80°C.

Stability: All frozen tissue sections are stable for 1 year from date of purchase if stored at -80°C without repeated freeze/thaws.

Product images:



4x Image



20x Image